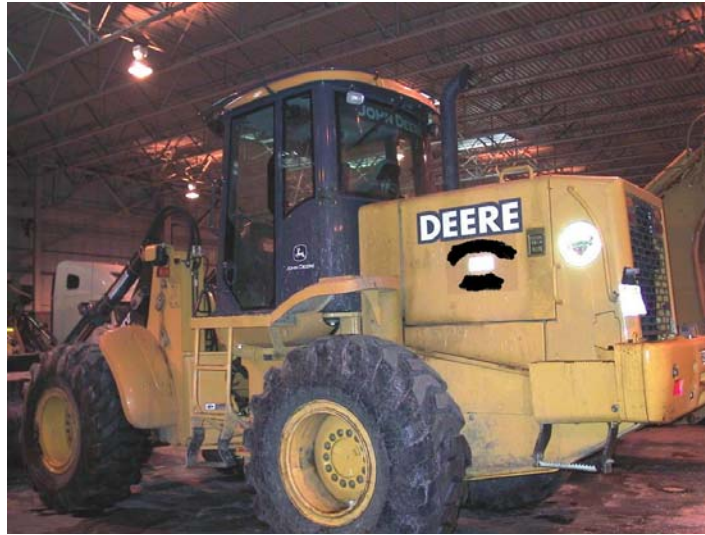


# FACE FACTS

Fatality Assessment & Control Evaluation

## HAZARD WARNING!

Workers who work in or around mobile equipment are at risk of serious injury or death.



A machine operator who worked for a liquid deicer distributing company was killed when he was run over by a front-end loader at a city salt stockyard. He was walking around the loader working area performing conveyer maintenance. A city equipment operator backed the loader out of a storage shed and struck the victim. The loader was missing two side-rearview mirrors and the victim was not wearing a high visibility safety vest. Also, there was no radio communication between the victim and the city equipment operators. (Case Report: 04NY002)

## HOW CAN THIS BE PREVENTED?

- ▶ Employers should set up a traffic control plan to coordinate the movements of all workers at the site, whether they are on foot or operating mobile equipment.
- ▶ Repair damaged equipment in a timely manner.
- ▶ Consider using additional safety devices on mobile equipment to warn operators about people or objects in blind spots.
- ▶ All employees and contractors should wear high visibility safety vests.
- ▶ Develop standard procedures for informing contractors of potential safety hazards.

The Fatality Assessment and Control Evaluation (FACE) program, in cooperation with the National Institute for Occupational Safety and Health (NIOSH) is one of many workplace health and safety programs administered by the New York State Department of Health. Additional information about the FACE program can be obtained by contacting:

NYSDOH FACE, Bureau of Occupational Health, Flanigan Square, Room 230, 547 River Street, Troy, NY 12180  
1-866-807-2130

FACE reports can be viewed on the New York State Department of Health website at: [www.health.state.ny.us/nysdoh/face/face.htm](http://www.health.state.ny.us/nysdoh/face/face.htm)



STATE OF NEW YORK DEPARTMENT OF HEALTH