

What is supportive housing?

Supportive housing is a simple commonsense solution to homelessness among vulnerable people: independent, affordable housing linked to easily-accessible support services aimed at helping at-risk tenants achieve their life goals. Tenants pay a third of their income in rent and have easy access to whatever assistance they need to achieve independence.

There are two types of supportive housing, "scattered-site" -- rented apartments in the community visited regularly by support staff - and single site -- apartments in a building developed and run by a nonprofit in which services are offered by on-site staff.

For most of the past 30 years, supportive housing has been developed for homeless individuals, with nearly half of all 46,000 units statewide set-aside for individuals coping with mental illness.

In 2011, as part of the Cuomo administration's sweeping overhaul of Medicaid, created the Medicaid Redesign Team's Supportive Housing Initiative pledging to fund development, operations and services in supportive housing for high-cost Medicaid recipients.

Several contracts for scattered-site apartments have been awarded. This brochure features those awards: PLEASE NOTE, the following are CONTRACTS, NOT VACANCIES.

For more information about supportive housing visit www.shnny.org



OFFICE OF ALCOHOL AND SUBSTANCE ABUSE SERVICES MRT HOUSING

Four organizations have 25 units each for high-cost Medicaid recipients who have a history of substance abuse



The Bridge

The Bridge has 25 units in Manhattan and the Bronx.

Maria Nicolai 212-678-7188 ext. 9.
mnicolai@thebridgeny.org



Palladia has 25 apartments in the Bronx.
Sharon Coates-Knibbs
212-979-8800 Ext 1116
Sharon.Coates-Knibbs@palladiainc.org



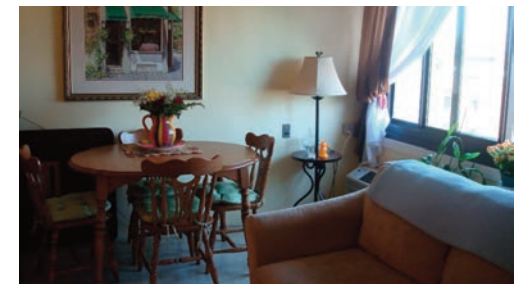
Fortune Society has 25 units in Queens.
Joyce Kelly
212-690-6202
jkelly@fortunesociety.org



Bridging Access to Care has 25 apartments in Brooklyn.
Florence Lee
347-505-5148
FLee@bac-ny.org



Supportive Housing for High-Need High-Cost Medicaid Recipients



OMH MRT APARTMENTS BRONX, QUEENS, STATEN ISLAND, MANHATTAN

All apartments are 'scattered site'.

BRONX:
Urban Pathways (22 units)
Joseph Micali
PHONE NUMBER
Jmicali@urbanpathways.org



MANHATTAN:
Heritage Health and Housing
(24 units)
Elizabeth Padilla
212-866-2600
epadilla@heritagenyc.org



QUEENS:
PSCH (21 units)
Veronika Omole
347-542-5689
Veronika.Omole@psch.org



STATEN ISLAND
Staten Island Behavioral Network
(21 units)
Jennifer Arlen
718-351-5530 x104
arlenjennifer@gmail.com



* also eligible are individuals who qualify for Medicaid but, because of institutionalization, are not currently recipients. This includes individuals leaving long-term psychiatric care and individuals re-entering the community from incarceration.

OMH MRT APARTMENTS BROOKLYN

All apartments are 'scattered site'.



Catholic Charities Neighborhood Services
(25 units) Samira Alieva 718-722-6229
salieva@ccbq.org



Comunilife (70)
Pam Timmins 718-617-6400 Ext. 7178
Ptimmins@comunilife.org



Institute for Community Living (20)
David Kamnitzer 718-855-4035 x 22101
DKamnitzer@iclinc.net



Jewish Board of Family & Children Services
(70) Arezoo Termechi 718-859-9760 ext.
238 atermechi@jbfc.org



OHEL (40) Marc Katz 718-435-5533
Marc_Katz@ohelfamily.org or
Yitz Elman 718-435-5533
Yitz_Elman@ohelfamily.org



Postgraduate Center for Mental Health
(70) Cara Turner 212-5606761
cturner@pgcmh.org
Sugandika Subawickrama
212-560-6711 ssubawickrama@pgcmh.org



St. Joseph's Medical Center (50)
Elizabeth Woods 718-982-4740
ewoods@svwsjmc.org
Soniar Clarke 718-804-2382
sclarke@svwsjmc.org



Unique People Services (5)
Confesora Castoie
718 741 0600
confesorac@uniquepeopleservices.org

WHO IS ELIGIBLE FOR MRT SUPPORTIVE HOUSING?

Unlike much supportive housing, MRT supportive housing's focus is not on ending chronic homelessness but in providing housing to high-cost Medicaid recipients who are homeless or unstably housed. The goal of MRT housing is to improve these individuals' health and decrease their use of emergency systems.

OFFICE OF MENTAL HEALTH MRT

OMH requires that individuals have a severe mental illness, that they are on Medicaid or are Medicaid-eligible, that they are high-cost users (synonymous with eligible for Health Home enrollment) and that they are not in stable housing. Individuals involved with ACT and AOT programs are also eligible.

OFFICE OF ALCOHOL AND SUBSTANCE ABUSE SERVICES MRT

OASAS requires that individuals be housing-needy single adults with chronic substance use disorders and other psychiatric and medical conditions who are high-frequency, high-cost Medicaid consumers currently defined as someone with either five ER visits or 2 in-patient stays in 12 months before referral.

WHO CAN REFER POTENTIAL TENANTS?

Health Homes, hospitals, shelters, residential treatment centers, psychiatric centers, halfway houses, and programs working with individuals who would be eligible to live in MRT housing.