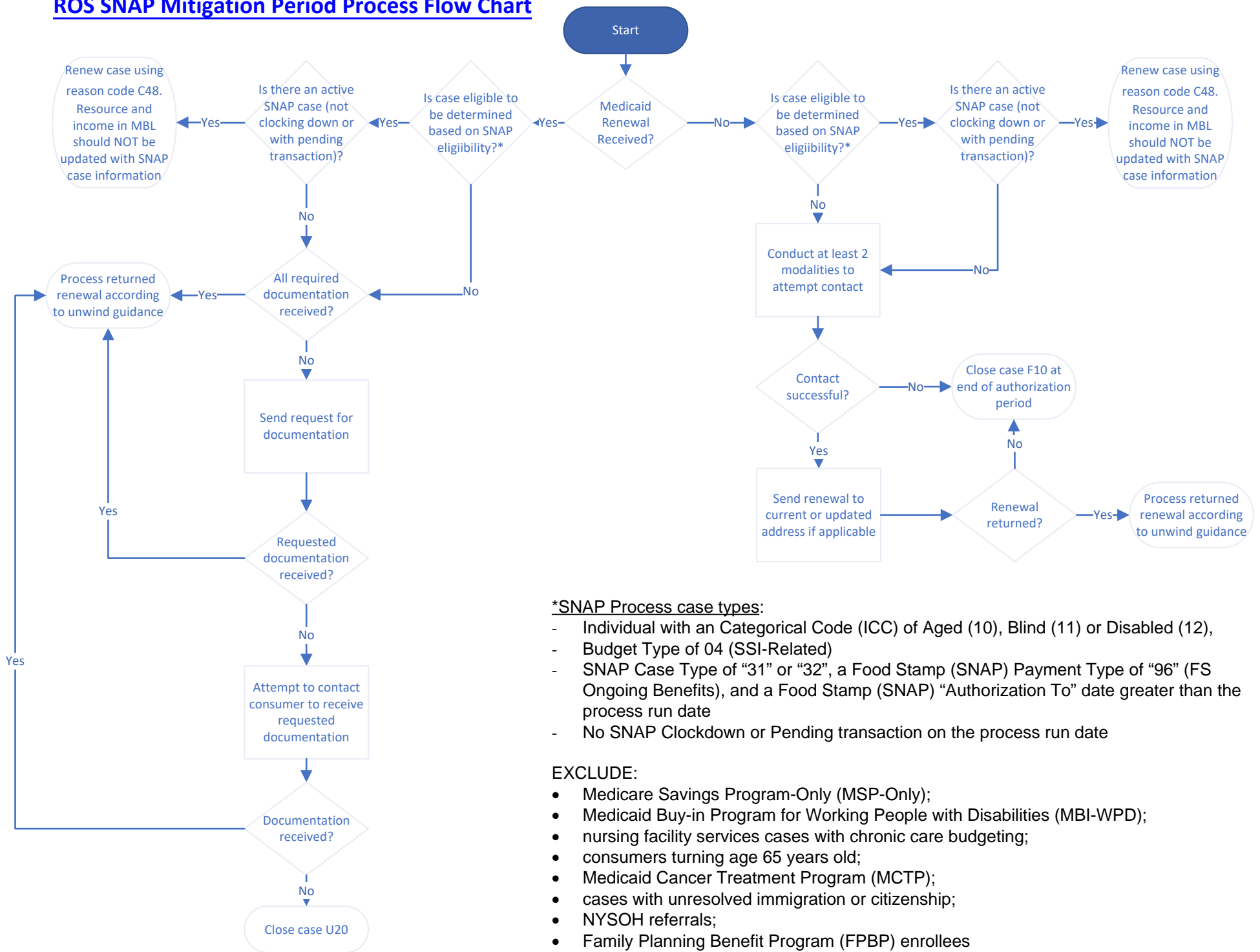


ROS SNAP Mitigation Period Process Flow Chart



*SNAP Process case types:

- Individual with an Categorical Code (ICC) of Aged (10), Blind (11) or Disabled (12),
- Budget Type of 04 (SSI-Related)
- SNAP Case Type of “31” or “32”, a Food Stamp (SNAP) Payment Type of “96” (FS Ongoing Benefits), and a Food Stamp (SNAP) “Authorization To” date greater than the process run date
- No SNAP Clockdown or Pending transaction on the process run date

EXCLUDE:

- Medicare Savings Program-Only (MSP-Only);
- Medicaid Buy-in Program for Working People with Disabilities (MBI-WPD);
- nursing facility services cases with chronic care budgeting;
- consumers turning age 65 years old;
- Medicaid Cancer Treatment Program (MCTP);
- cases with unresolved immigration or citizenship;
- NYSOH referrals;
- Family Planning Benefit Program (FPBP) enrollees
- Former Foster Care enrollees