



# Bassett Medical Center PPS

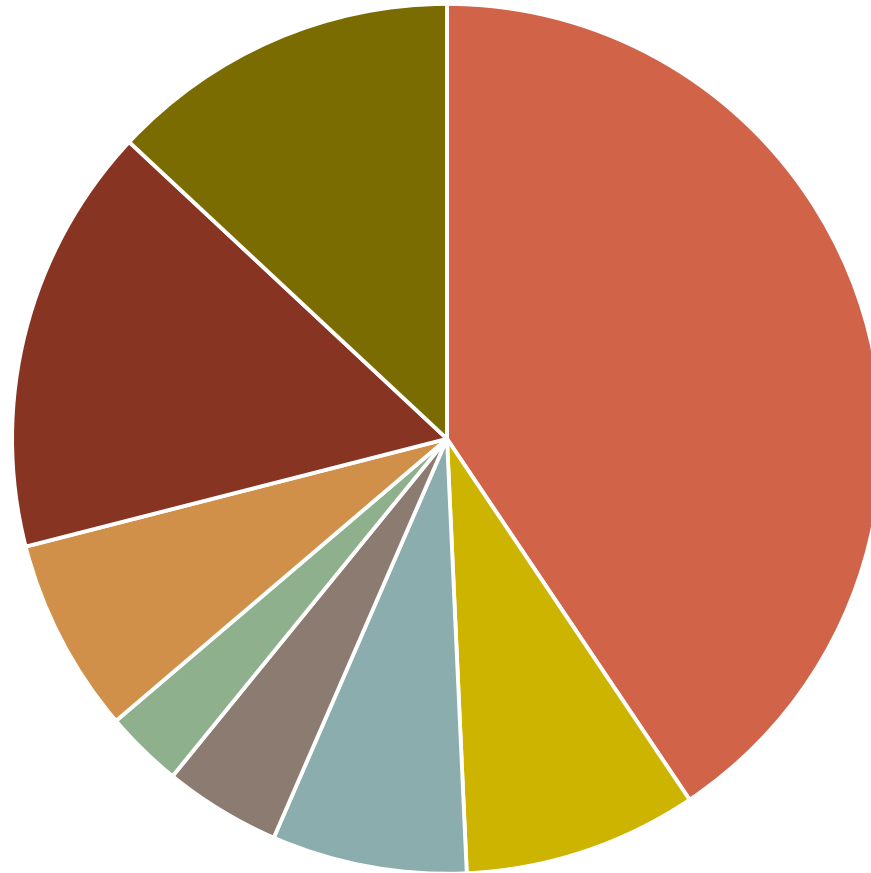
Sue van der Sommen, Executive Director  
Leatherstocking Collaborative Health Partners

Project Approval and Oversight Panel Meeting  
November 9-10, 2015

# About Leatherstocking ...

- Collaborative model; Bassett Medical Center as Lead Agency
- 62,043 attributed lives over five-county region
  - Delaware, Herkimer, Otsego, Schoharie, & Madison
  - Partners in Chenango & Oneida
- 11 Projects
- 68 signed partner agreements
  - seeking additional partnerships during open enrollment period
- In process of finalizing funds flow agreements for partners
- Seeking to form single-member LLC

# PPS Partner Overview

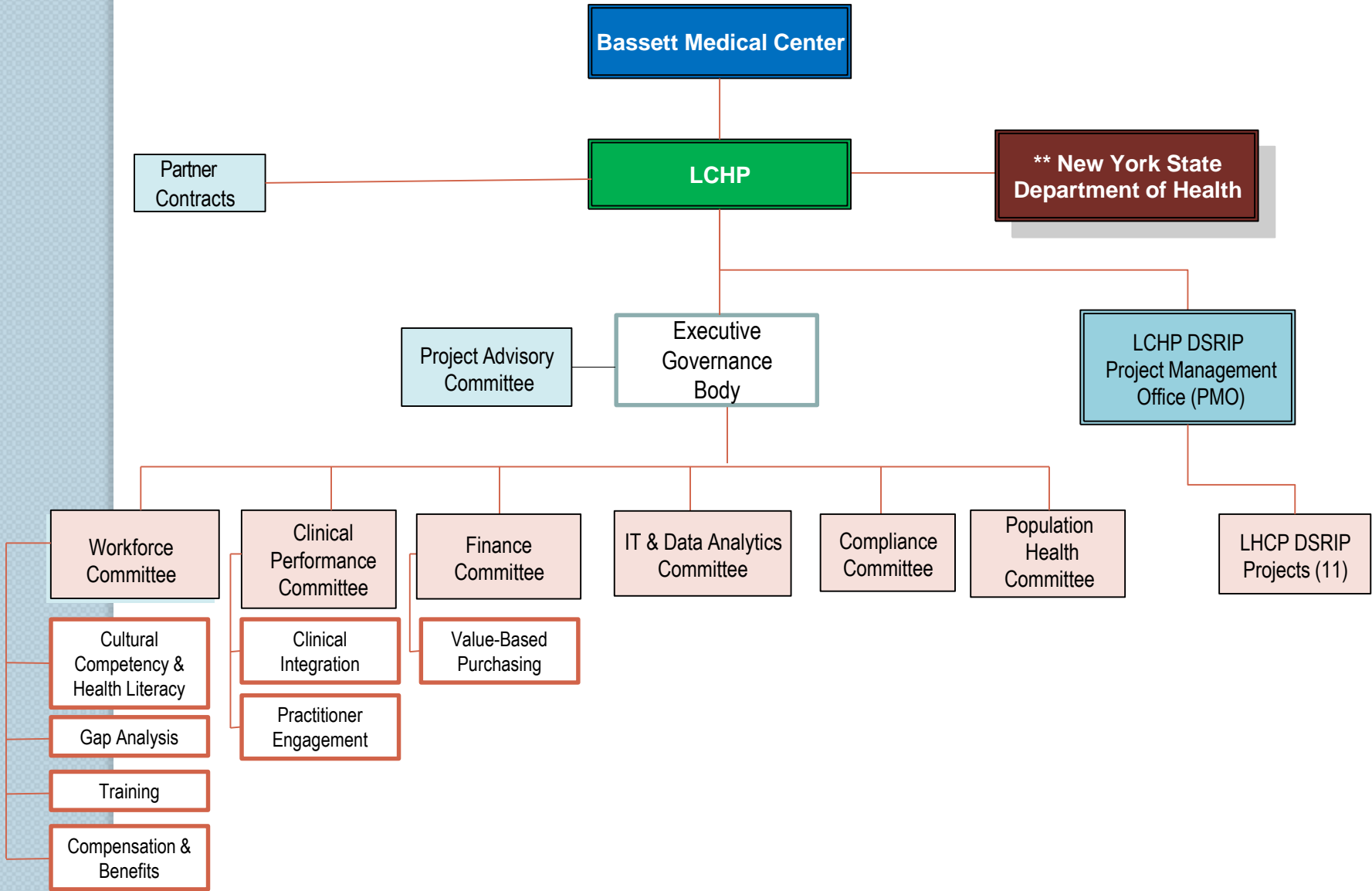


- Community-Based Organizations
- Clinics
- Developmental Disabilities
- Home Care
- Hospice
- Hospital
- Long-term Care
- Mental Health/Substance Abuse

# EXECUTIVE GOVERNANCE BODY

- Representation from all counties
- Representation from all swim lanes
- Eleven-member governing body representative of PPS membership
  - Hospitals (including staunch competitor of lead agency) – inpatient & emergency department; county agency (mental/behavioral health); long term care; developmental disability; substance abuse;
- IT expertise; finance
- Physicians/administrators
- All counties represented
- Formal governing procedures developed

# FUTURE STATE: Bassett PPS, LLC d/b/a Leatherstocking Collaborative Health Partners - Organizational Structure



*\*\* Contractual relationship with LCHP, including reporting requirements and other functions*

# Project Advisory Committee

- Strong CBO commitment/membership
- Focused on how to better reach Medicaid members through community engagement
- Presently finalizing community and agency engagement plan
- Over 25 members from six counties; all swim lanes
- Executive level to “front-line” staff

# Workforce ~ Addressing Training Needs

- Health Workforce New York (HWNY ~ AHEC) ~ workforce vendor
- HWapps ~ online platform being used by LCHP to manage workforce transitions
  - Capabilities of the program shared at the All-Partner meeting last quarter
  - PPS workgroups utilizing HWapps for communication, sharing
  - “Training Marketplace” highlights & promotes training opportunities
  - HWNY and the PPS are actively planning an intensive All-Partner training on the use of HWapps in early January, 2016.
- Members of the LCHP Training Subcommittee represent community based providers in healthcare and education.
  - HWNY developed “DSRIP 101”
  - Presentation @ Mohawk Valley Community College helped advance understanding of employer needs with respect to future workers/DSRIP related training

# Workforce ~ Emerging Titles

- In process of identifying emerging job titles as part of future state mapping
- Career ladders will be identified as part of the Transition Road Map process.
- Engagement with Educational Facilities:
  - HWNY has met with the leadership of Mohawk Valley Community College (MVCC) to help advance understanding of changing employer needs and DSRIP related training.
  - Ongoing discussions are held with representatives of SUNY RP2 with respect to SUNY's response to DSRIP
  - SUNY RP2 will present at the next meeting of the Workforce Leads/Vendors Meeting to be hosted by our PPS on 11-16-15



# Focus on PCMH & Primary Care

- PPS-wide focus on primary care
  - Core of most projects
- Five partner organizations pursuing PCMH
  - Over 40 practice sites
- Differing levels of recognition
  - From no recognition to those actively pursuing PCMH 2014 standards
- Engaged Primary Care Development Corporation (PCDC) to assist our PPS partners with this work
- Met patient engagement commitment for first quarterly reporting period
- Subject-matter expert in PCMH development serving as project lead
- Strong physician leadership/engagement

# Collaborative Efforts

- Care Coordination ~ community navigators connecting with behavioral health providers in primary care settings ~ a patient's story
  - Patient with multiple co-morbidities; missed several MD appt; extensive ED use
  - Social worker at primary care site connected patient with community navigator
  - Navigator conducted home assessment ~ barriers to completing basic daily living activities despite in-home assistance
  - Exacerbated health issues due to lack of self-care; non-compliance with medication; increasing depression
  - Connected patient with care manager, PCP, community services

## PATIENT'S NEW CARE TEAM

- ✓ Navigator
- ✓ Care manager
- ✓ Crisis counselor
- ✓ Adult protective caseworker
- ✓ PCP
- ✓ Visiting nurse
- ✓ Home care agency
- ✓ Neighbor
- ✓ Local church
- ✓ Landlord at apartment complex

- Results:
  - PCP ordered stat mental health assessment – navigator contacted MCAT – Mobile Crisis Assessment Team to conduct a home health assessment
  - Routine home visits established with skilled nursing services
  - Medication compliance
  - Self-care dramatically improved
  - Patient reportedly “markedly improved”
  - Navigator working with landlord to move patient to first-floor apartment
  - Weekly-check in established with patient to check on her progress and changing needs

# Collaborative Efforts

- “Epic CareLink” Pilot ~ EPIC EMR access granted to community-based organizations and non-affiliated providers
  - Permits real-time access to medical information required for to provide care and guidance for patients
  - Currently being piloted with community-based navigators and non-affiliated providers; health plan
  - Pilot recently initiated – good feedback, but no data to report at this point

# Addressing Community Needs

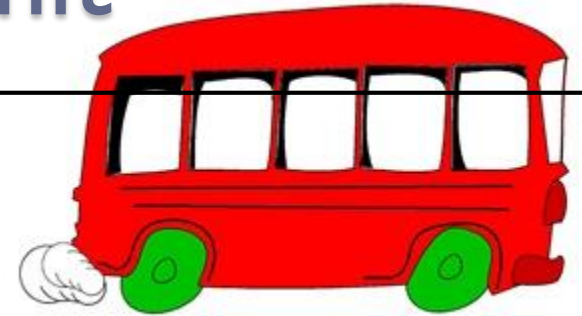
• In one PPS county alone, over 75% of all felony indictments are heroin related: PAARI – “Police-Assisted Addiction and Recovery Initiative” underway

- Local law enforcement agencies are reaching out to opiate-addicted community to provide assistance with recovery and addiction
- Open invitation to addicts to bring their supplies and paraphernalia to the police department
- Police will assist patient with receiving addiction treatment
- Our PPS is partnering with the law enforcement agencies to assist with their efforts

# Cultural Competency Collaboration

- The Rainbow Connection Club hosts "Safe Space Training" and "Safe Space Workshops" in the district focused on the LGBTQ population.
- Participants discussed terminology relevant in today's culture and how to best carry out a commitment to ensuring that every individual feels safe and secure expressing identity
- The PPS is connecting school officials with the local LGBTQ wellness clinic to provide support/training for each other's initiatives
- Working in collaboration with local LGBTQ provider

# Transportation Summit



Otsego County DSS

Opportunities for Otsego

Office for the Aging

Birnie Bus Service

Otsego County Community Services

Bassett Medical Center

ARC Otsego

Chamber of Commerce

Oneonta Bus Lines

Village Trolley Services

Oneonta Public Transit

Family Services

Pathfinder Village

A&D Taxi Service

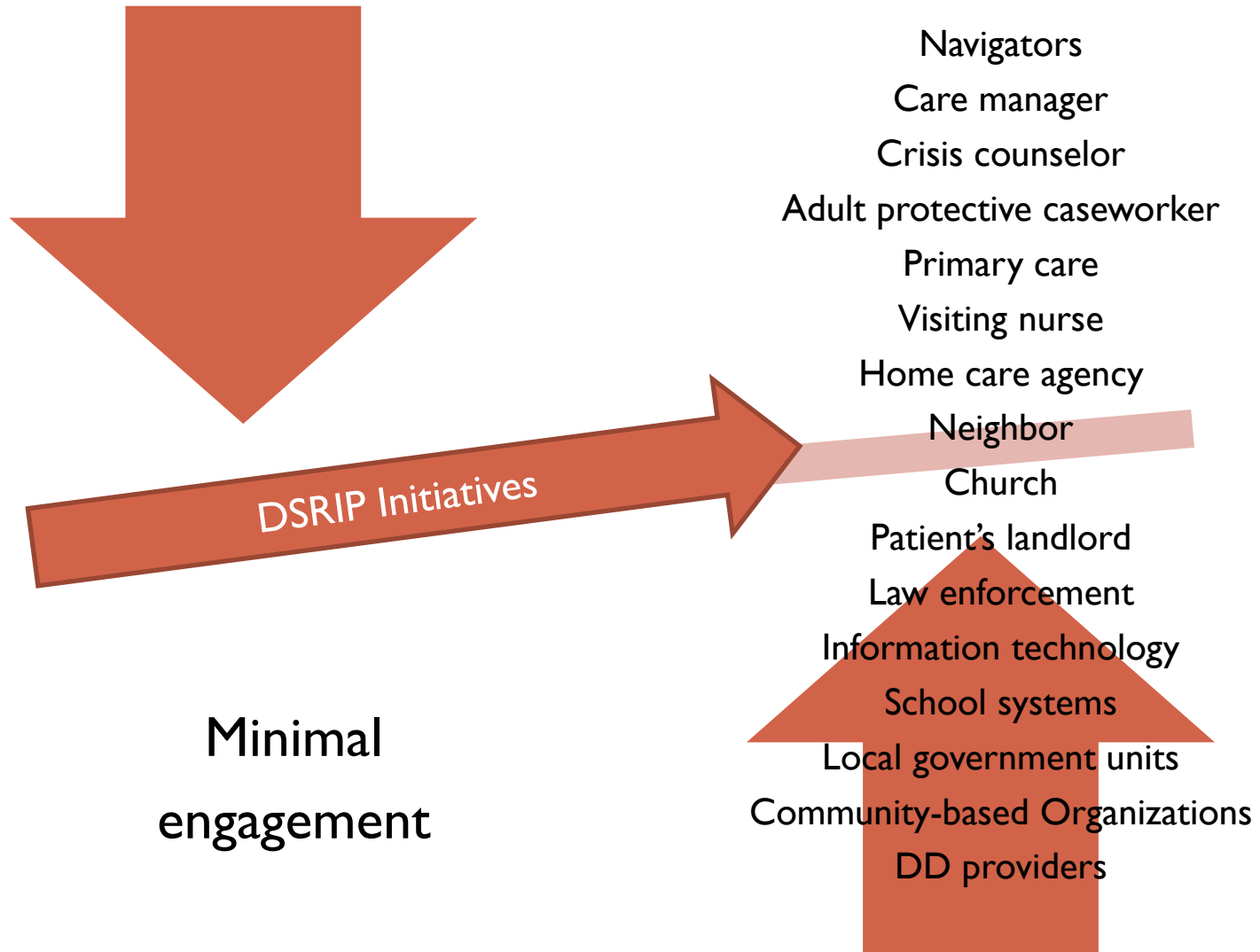
Catholic Charities

# Tapping in to expertise within PPS

- **Contracting with CBOs within PPS**
  - 2.c.i & 2.d.i
  - SBIRT Training
  - Mental Health/Substance Abuse Outreach & Education
- **Stakeholder Engagement**
  - Inherent in the DSRIP work
  - Community & Partner engagement
- **Developmentally-Disabled Provider Summit**
  - NYSARC, local DD providers



# Results of Early Collaboration



Sue van der Sommen, Executive Director  
(607) 547-3558

[Susan.vandersommen@bassett.org](mailto:Susan.vandersommen@bassett.org)