



COMMUNITY PARTNERS OF WNY

Performing Provider System



**Department of
Health**

State Briefing

Amy White-Storfer, Director • Dr. Carlos Santos, Medical Director

11/09/2015



**Department of
Health**

Introduction

- Our PPS covers the counties of Niagara, Erie and Chautauqua counties.
- We are the second smallest PPS in NYS from a project 5-year budget perspective
- Our focus is on the questions provided ahead of the meeting by our hosts.



COMMUNITY PARTNERS OF WNY

Performing Provider System



**Department of
Health**

Summary

1. Governance overview
2. Contracts Update
3. Primary Care Outreach/PCMH planning
4. Addressing NYS Prevention Agenda

As time allows:

- County Outreach
- Cultural Competency Update
- Workforce Update

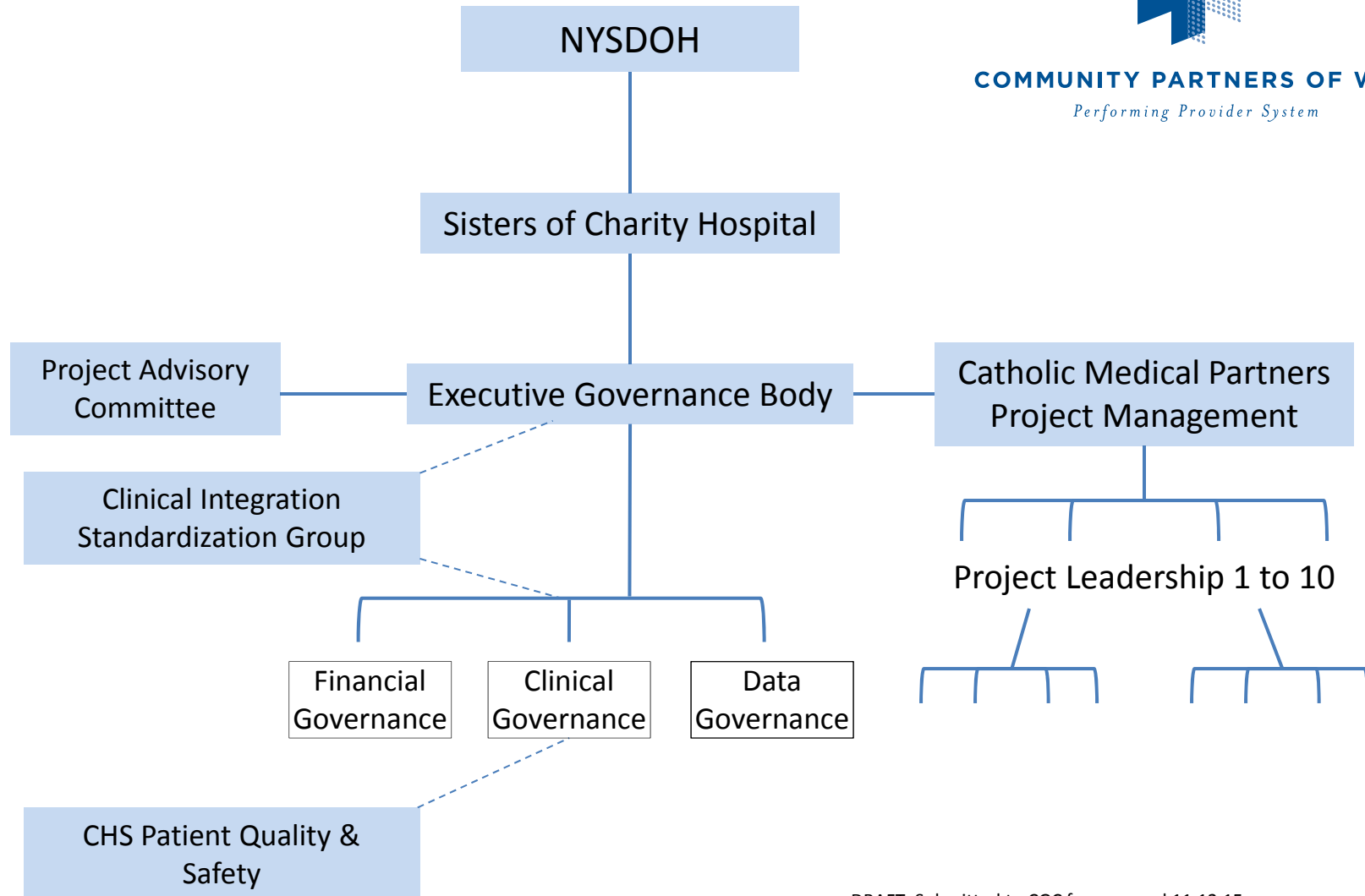


COMMUNITY PARTNERS OF WNY

Performing Provider System



COMMUNITY PARTNERS OF WNY
Performing Provider System



DRAFT. Submitted to CGC for approval 11.12.15

Summary Current Contracts

for project & performance based payments

- Several project contracts executed to date
- Additionally, many project contracts in progress

Current network physician contracts:

- 300 practice groups or approximately 900 physicians
- All executed taking advantage of established agreements in place

Contracts Progress Report:

Detail Non-Hospital

Contracts completed:

- Telemedicine Contracts: WCA Hospital (Chautauqua)
- Nurse Family Partnership: Chautauqua County Department of Health

Highlights of contracts in progress:

- Palliative Care Project: Hospice of Buffalo
- Urban League and Catholic Charities: Community Outreach Contracts across several projects
- Smoking Cessation Project: Roswell Park (Foundation)
- ECCPASA, Mental Health Association: Mental Emotional behavioral health well being
- Integration primary care: Physician network planning in progress
- Cultural Competency: P2 Collaborative of Western NY



COMMUNITY PARTNERS OF WNY

Performing Provider System

Contracts Progress Report:

Detail Physicians and Physician Groups

- Catholic Medical Partners Network, Erie & Niagara counties
- Roswell Physician Group: Medical Group Contract in progress
- 120 physicians in Chautauqua
- WCA and Chautauqua County Health Network: contracts in progress for Domain 2, 3 and 4 projects
- Target complete date for physician and physician groups is DY1Q4



- Implementation dollars budgeted and planned for distribution.
- Final funds flow plan is pending final approval from New York State and CMS.
- To date, limited distribution of dollars due continued conversations cited above.



COMMUNITY PARTNERS OF WNY

Performing Provider System

PCMH expansion:

Primary Care Report

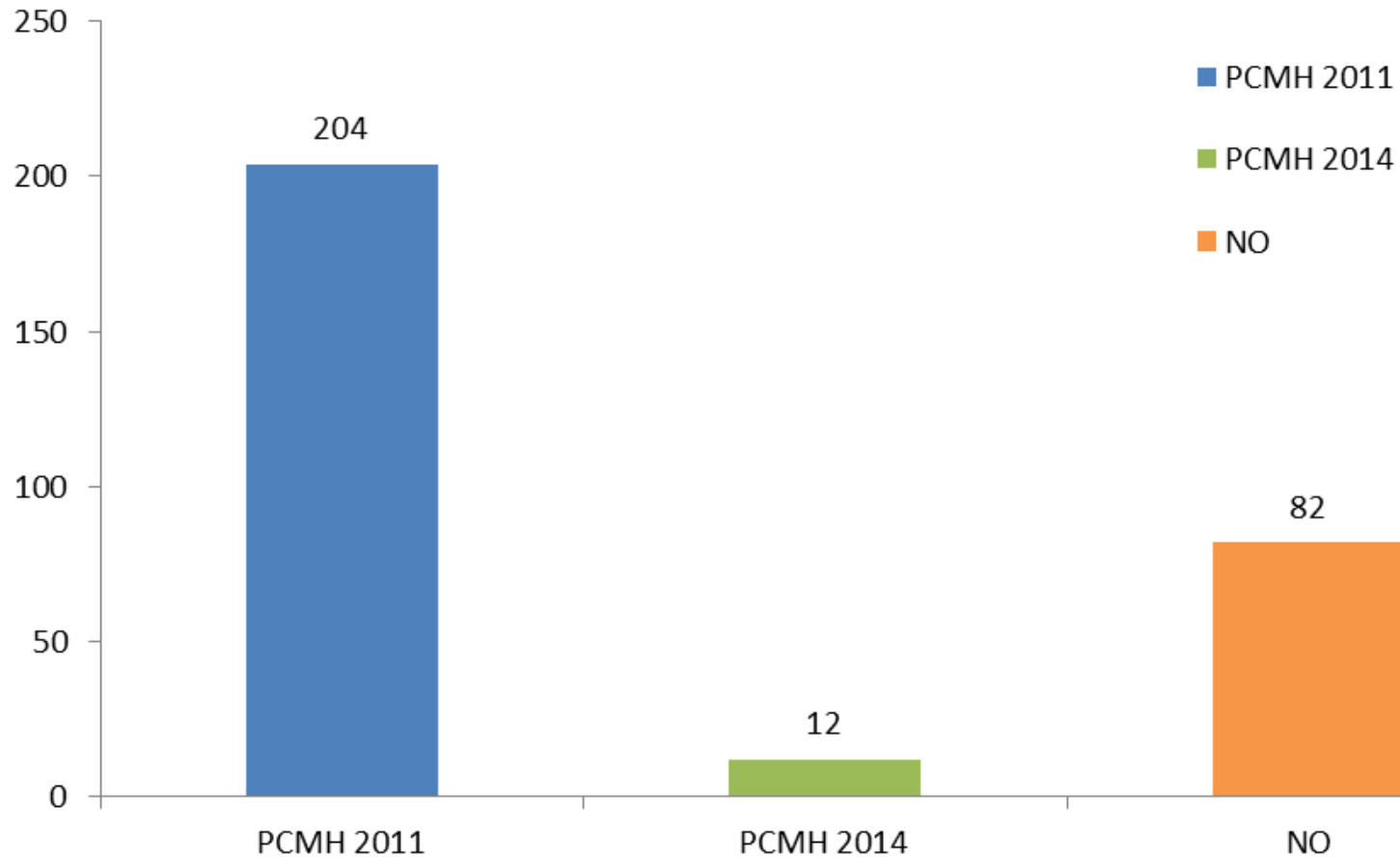
- ✓ Generally, current network's 2017 goal is for PCPs moving to 2014 standards.
- ✓ DSRIP funds to help address challenges bringing providers aboard that are new to network (i.e. Chautauqua, Niagara County)



COMMUNITY PARTNERS OF WNY

Performing Provider System

Status PCMH Across Erie, Niagara, and Chautauqua



Data current as of 10/30/15

CPWNY Budget

Primary Care Report:

Summary: Resources focused on clinical staff, Dietitians, Social Workers, Pharmacists, Clinical Transformation Team

In 2.a.i budget:

- ✓ Percentage of Full Time clinical transformation team allocated to DSRIP
- ✓ Large hospital in Chautauqua and related key partners funded
- ✓ Leverage existing and future performance dashboards to help providers identify areas for improvement.
- ✓ Budget allocated to population health management tool (i.e. notify practices when patients hit the ER or are admitted to the hospital.)

In 2.b.iii budget:

- ✓ Percentage of full time team allocated to DSRIP for hospital partners (i.e. social workers to assist with primary care linkages.)
- ✓ New social workers in the primary care safety net clinics

In 2.b. iv. Budget:

- ✓ New Full Time Social Worker hired on care transition team
- ✓ Physicians incentives, such as PMPM to support care transition work.

Highlights:

Other CPWNY Primary Care Initiatives

- 3.a.i. Integration of Behavioral Health and Primary Care (PCMH level 3)
 - ✓ Spectrum Health
 - ✓ Collaborative with Millennium Care Collaborative
- 3.g.i Integration of Palliative Care into primary care practices
 - ✓ Hospice of Greater Buffalo



COMMUNITY PARTNERS OF WNY

Performing Provider System

Prevention agenda: Domain 4

4.a.i Mental Emotional and Behavioral Health-Well in Communities (MEB)

- ✓ ECCPASA/Mental Health Association
- ✓ Collaboration with MCC

4.b.i Promote tobacco use cessation, among low SES or those with poor mental health

- ✓ Roswell Park



Mental, Emotional & Behavioral Health Promotion

- Project informed by WNY community needs assessment & NYS prevention agenda focus area
- Selected programs off the SAMHSA registry to address community gaps
 - depression
 - suicide prevention
 - prescription/illicit drug use & abuse.
- Community wide PR campaign
 - reduce stigma
 - promote good mental health

Tobacco Cessation:

Low SES and Poor Mental Health Target

- Roswell Park Cancer Institute
- Project aligned with Prevention Agenda Goal #2.2
- Increase provider use for the “opt to quit” :
 1. Provider signs patient up.
 2. Quit line contacts patient.
 3. Follow-up with provider.
- Provider awareness and “click a button” to activate.
- Target FQHCs/Multi-Unit Housing

Additional Updates

- County Outreach
- Cultural Competency/Health Literacy
- Workforce Updates



COMMUNITY PARTNERS OF WNY

Performing Provider System

Thank you and questions



COMMUNITY PARTNERS OF WNY

Performing Provider System