



**Department
of Health**

Electronic Visit Verification (EVV)

Technical Assistance Call

October 2020

Enrollment – Review

Step 1: Enroll as a NYS Medicaid Provider and get an MMIS ID, if necessary

Step 2: Determine who will be your “submitter” (you can be your own submitter)

Step 3: If your submitter is not yet enrolled as a Medicaid Provider, have them enroll too*

Step 4: Have the submitter obtain the login credentials for the eMedNY Developer Portal from the eMedNY Web Portal <https://portal.emedny.org>

Step 5: Log in to the eMedNY Developer Portal and obtain API Keys at <https://developer.emedny.io>

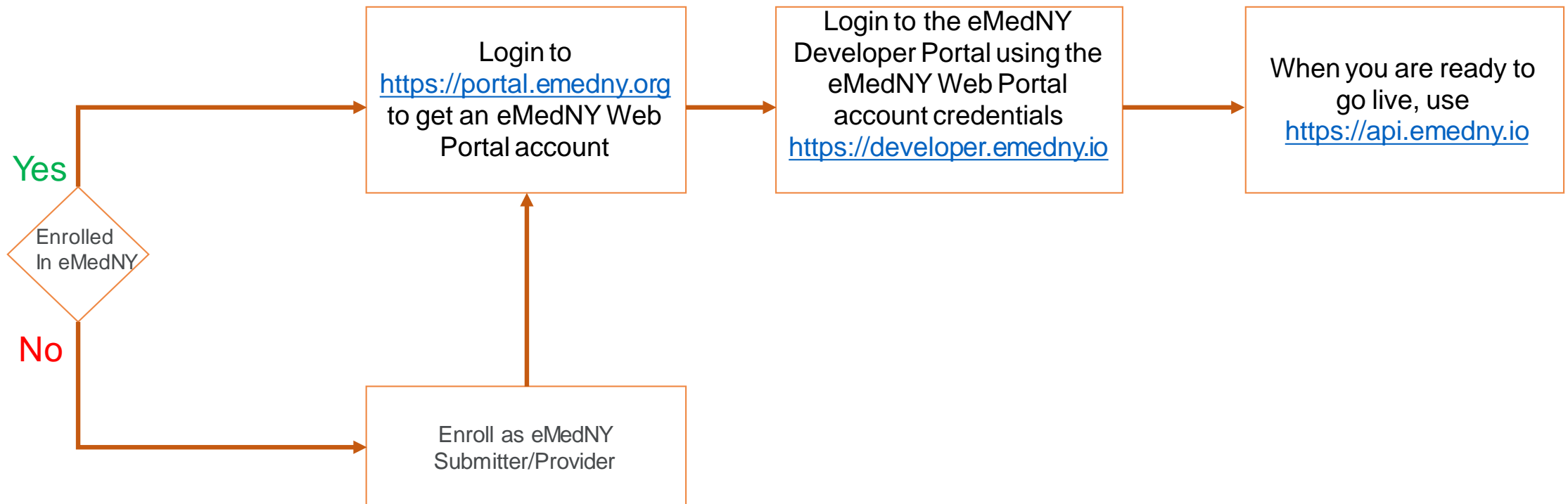
*If your submitter is an EVV vendor only or another entity who will not be providing Medicaid services, they should enroll as a non-billing service bureau

* Submitters can enroll with eMedNY at anytime

Provider Onboarding High Level Flow

Are you an active eMedNY Provider/Submitter?

You can request the API keys and test using the eMedNY Developer Portal



Signing up for EVV

October 2020

- If you are not enrolled with eMedNY – Please sign up!
- Visit <https://www.emedny.org> for help
- Vendors need to enroll as service bureau

If you have any questions, contact the eMedNY Call Center at (800) 343-9000

home self help glossary site map

ENHANCED BY Google

What's New Information **Provider Enrollment** Provider Manuals Provider Outreach and Training Contacts eMedNY HIPAA Support eMedNY Tools Center PTAR

Provider Enrollment & Maintenance

New Enrollment

Already Enrolled

IF ANY OF THESE QUESTIONS APPLY TO YOU, CLICK ON YOUR PROVIDER TYPE ON THE RIGHT →

Provider List Filter

Select a radio button to filter the list of providers below

- Practitioner
- Institution
- Business
- Group
- TOMH
- OPWDD
- OASAS
- All Providers

- Adult Day Health Care (ADHC) Program
- Ambulatory Surgery Centers (ASC)
- Assisted Living Program (ALP)
- Audiologist
- Bridges to Health Waiver (B2H)
- Care at Home Waiver (CAH)
- Case Management
- Certified Asthma Educator (CAE)
- Certified Diabetes Educator (CDE)

Useful Information

COVID-19 Response

- If you are an active provider – Sign up for eMedNY Web Portal

home | self help | glossary | site map

ENHANCED BY Google

What's New Information Provider Enrollment Provider Manuals Provider Outreach and Training Contacts eMedNY HIPAA Support eMedNY Tools Center PTAR

COVID-19 Provisional Temporary PROVIDER ENROLLMENT ENROLL NOW

welcome to eMedNY

NEW MEDICARE CARDS MEDICAID MANAGED CARE NETWORK PTAR REVALIDATION

Notices

June 1, 2020

Attention: WMS Roster Replacement Project Survey

As the Department of Health moves toward implementing the WMS Roster Replacement Project, we need to understand each Plan's current implementation efforts. We are

Are you compliant with NYSDOH EFT Requirement?

Login ePACES ePACES Information

Login eXchange eXchange Information

Login PTAR PTAR Information

Provider Portal Web Portal Information

Enter Facilities Practitioner's NPIs

eMedNY LISTSERV®

Submitter Dashboard Dashboard Information Test Environment

MEIPASS

NEW YORK STATE Department of Health

- <https://portal.emedny.org>
- Self Register



The screenshot shows the eMedNY Web Portal interface. At the top left is the logo "eMedNY Web Portal". The main content area is titled "Login to eMedNY Web Portal" and contains the following elements:

- Input fields for "User Id: *" and "Password: *", both with asterisks indicating required fields.
- A reCAPTCHA widget with the text "I'm not a robot" and a "reCAPTCHA Privacy - Terms" link.
- A checkbox labeled "I Agree to Medicaid Confidentiality Regulations".
- A "Submit" button.
- Links for "[Forgot Password](#)" and "[Forgot User Id](#)".

To the right of the login form is a section titled "Don't have a User Id?". It contains two boxes:

- A box with the link "[Register with us](#)" and the text "Create an account to enroll in services and applications provided by eMedNY."
- A box with the link "[Continue your Registration](#)" and the text "If you did not complete your Registration you can continue the Registration."

- Answer some questions
- This will be matched against the eMedNY database

eMedNY Web Portal

Create Web Portal Account

Fields with * are required

Provider Information

NPI: *

I do not have NPI


Address 1: *

Address 2:

City: *

State: *

Zip: *

I'm not a robot  reCAPTCHA
Privacy - Terms

- Using the eMedNY Web Portal credentials to login to eMedNY Developer Portal
- <https://developer.emednytest.io>
- <https://developer.emedny.io>

eMedNY Login

eMedNY API Platform

Effortless connectivity with Medicaid Web Services

[View eMedNY API's for provider's »](#)

EVV API

Electronic Visit Verification (EVV) API for New York Medicaid

[View Documentation](#)

Getting Started with eMedNY API

eMedNY API Best Practices

[View API Best practices](#)

No Access to the Portal ?

Sign up for EVV API Portal Access.

[Visit Provider Portal to Signup](#)

Demo

October 2020

Developer Portal Registration

- Login to both Prod and Test Developer Portal using the credentials issued by the eMedNY Web Portal
- Keys issued in the Test Developer Portal will only work with test API gateway
- Keys issued in the Production Developer Portal will only work with Prod API gateway
- All data validations are on in the Test environment; entities can test various use cases
- API Keys currently issued in the Test development region have no expiration
- API Keys issued in production will expire every 6 (six) months. Renewal of API Keys is done through the Prod API Developer Portal
- Key requests will be manually approved for Pilot testers within 24 hours – the requester will receive an email once the key is approved

Key URLs

Test

<https://developer.emednytest.io/portal/>

<https://api.emednytest.io>

Prod

<https://developer.emedny.io/portal/>

<https://api.emedny.io>

API Services

Create/Update a Single EVV Request

PUT

Batch Insert Multiple EVV Records

POST

Delete and EVV Record

DELETE

Retrieve an EVV Record

GET

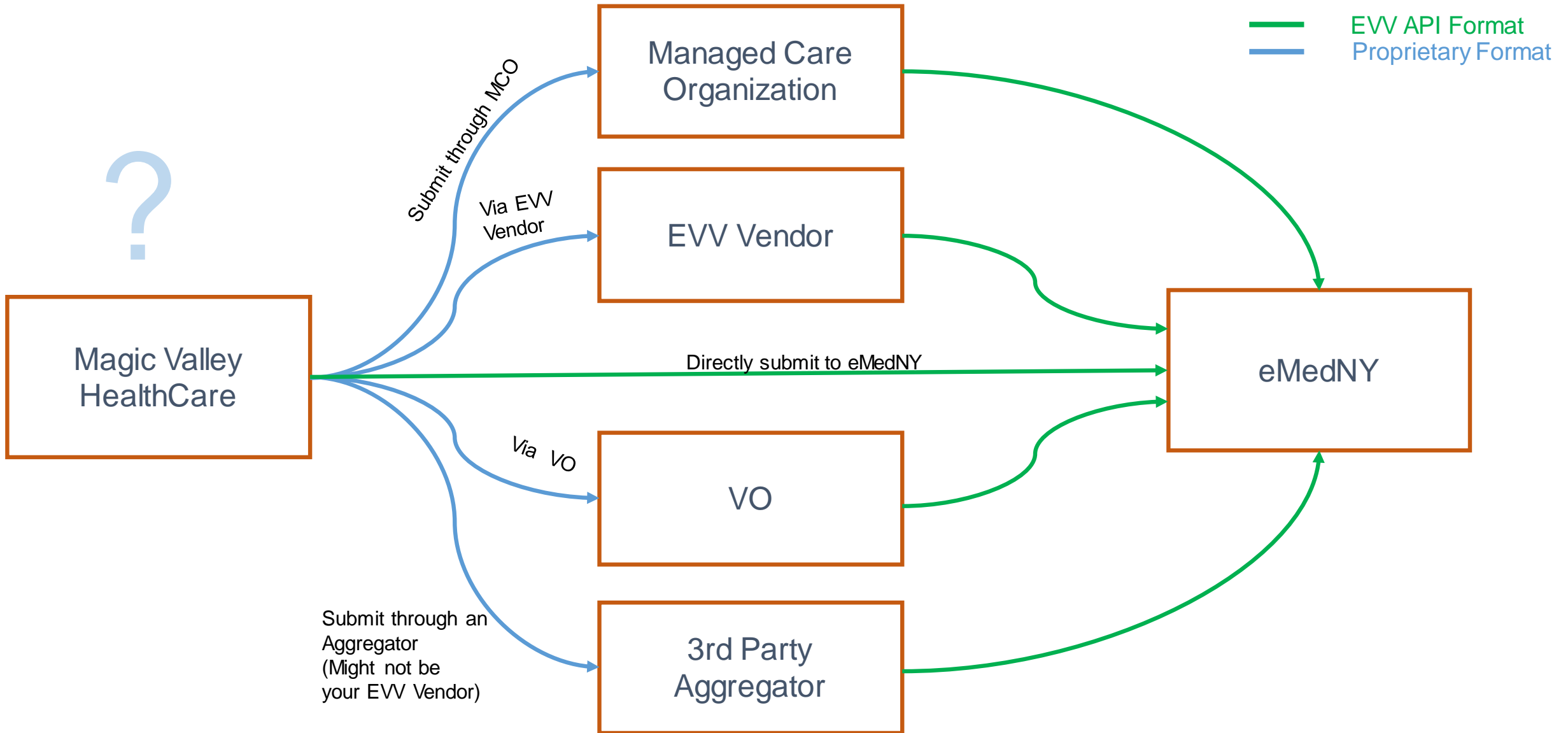
Using the API

- Any of these actions can be invoked on the API
- Update/delete can only be done on data you submitted
- Fair use policy (Not hard caps yet)
 - Up to 5 threads concurrently per API user
 - No max batch size set, but recommend the use of smaller batches (smaller batches are processed faster)
- The API service is available throughout day and night
- Integrate the API call in to your existing process in batch or real-time mode
- Send corrections as updates (you will need keep track of Transaction ID)

API Key Best Practices

- Do not embed API Keys directly in code
- Do not store API Keys in files inside your application's source tree
- Set up application and API Key restrictions
- Promptly reach out to us if you think the API Key is comprised
- Reduce the number of API Keys in use to minimize exposure to attacks
- Regenerate your API Keys periodically

Multiple paths to submit EVV to eMedNY - Choose the path that is appropriate for your needs



Getting Help!

- EVV website for all resources EVV (User guide, ICD etc.)
 - <https://www.health.ny.gov/evv>
- EVV Mailbox for all EVV questions
 - EVVHelp@health.ny.gov
- eMedNY Provider Services Help Desk (Questions regarding enrollment or access to the Web Portals)
 - Call eMedNY Call Center: **1-800-343-9000**
 - www.emedny.org
 - <https://www.emedny.org/info/ProviderEnrollment/index.aspx>
- Get your eMedNY Web Portal User ID here
 - <https://portal.emedny.org>
- Get your API Keys here
 - <https://developer.emednytest.io> (Test)
 - <https://developer.emedny.io> (Prod)

EVV Implementation Questions and Resources



EVV Help Mailbox

- EVVHelp@health.ny.gov

NYS EVV Listserv Email

- listserv@listserv.health.state.ny.us

Please include the following in your email sign-up request:
SUBSCRIBE EVV-L YourFirstName YourLastName



Website Resources

NYS DOH EVV Website

- <https://www.health.ny.gov/evv>