

NEW YORK STATE DEPARTMENT OF HEALTH

Injury Indicators Report

2014 Data

New York State

Bureau of Occupational Health and Injury Prevention

Contents

- Introduction 3
 - Data Sources Used 3
 - Data Notes 3
 - Acknowledgements..... 3
- Background 4
 - What is an injury? 4
 - Who do injuries impact? 4
 - What is the magnitude of the Injury problem in NYS? 4
- All Injuries 5
 - Fatalities 5
 - Hospitalizations..... 6
 - Emergency Department Visits 7
- Drowning and Near-Drowning Injuries 8
 - Fatalities 8
 - Hospitalizations..... 9
 - Emergency Department Visits 10
- Unintentional Fall-Related Injuries 11
 - Fatalities 11
 - Hospitalizations..... 12
 - Emergency Department Visits 13
- Hip Fractures Among Older New Yorkers 14
 - Hospitalizations..... 14
 - Emergency Department Visits 15
- Unintentional Fire-Related Injuries 16
 - Fatalities 16
 - Hospitalizations..... 17
 - Emergency Department Visits 18
- Firearm-Related Injuries 19
 - Fatalities 19
 - Hospitalizations..... 20
 - Emergency Department Visits 21
- Homicide and Assault-Related Injuries 22

Fatalities	22
Hospitalizations.....	23
Emergency Department Visits	24
Unintentional Motor Vehicle Traffic-Related Injuries	25
Fatalities.....	25
Hospitalizations.....	26
Emergency Department Visits	27
Poisoning-Related Injuries	28
Fatalities.....	28
Fatalities Due to Drug Overdoses	29
Hospitalizations.....	30
Emergency Department Visits	31
Suicide and Self-Inflicted Injuries.....	32
Fatalities.....	32
Hospitalizations.....	33
Emergency Department Visits	34
Traumatic Brain Injuries.....	35
Fatalities.....	35
Hospitalizations.....	36
Emergency Department Visits	37

Introduction

This report highlights the injury indicator data as reported by the New York State Department of Health (NYSDOH), Bureau of Occupational Health and Injury Prevention (BOHIP) to the Centers for Disease Control and Prevention (CDC).

Data Sources Used

This report uses the 2014 Vital Statistics (VS) death files for surveillance of injury mortality. The NYSDOH maintains the VS death files through vital records. External cause of mortality codes are recorded in the VS death files. These codes capture the cause and intent of the injury. Also available are multiple cause of death data, which is required to determine traumatic brain injury numbers.

This report also uses the Hospital Discharge Data Set (HDDS) and the Emergency Department (ED) data in surveillance of injury morbidity. The NYS DOH maintains the HDDS and ED, through the Statewide Planning and Research Cooperative System (SPARCS). External cause of injury codes and diagnosis codes are recorded in the HDDS and the ED data. For this report, the incidence of ED visits does not include patients who were subsequently admitted into the hospital.

Denominator data for rates were determined using the Intercensal Estimates of the Resident Population by Sex and Age for New York: April 1, 2010 to July 1, 2014: U.S. Census Bureau, Population Division; September 2015.

Data Notes

The data was prepared as per Thomas KE, Johnson RL. State injury indicators report: Instructions for Preparing 2014 Data. Atlanta (GA): Centers for Disease Control and Prevention, National Center for Injury Prevention and Control; 2016.

To protect patient privacy, data based on an incidence of less than six are not reported and will be denoted with an asterisk (*). In addition, rates based on a frequency of less than 20 are unstable. These rates are denoted with a double asterisk (**). Please use caution while using these rates.

Acknowledgements

The Bureau of Occupational Health and Injury Prevention would like to acknowledge our grant funders, without whom this work would be impossible.

- The Centers for Disease Control and Prevention, the National Center for Injury Prevention and Control.
- The New York State Governor's Traffic Safety Committee.

Background

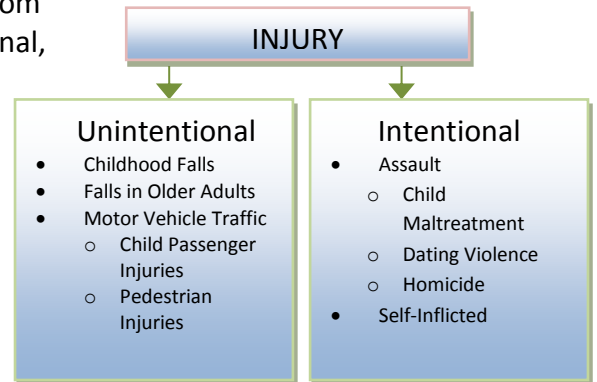
What is an injury?

An injury is any damage to the cells and organs resulting from energy exposure. Injuries may be intentional or unintentional, but these are predictable and preventable events.

Who do injuries impact?

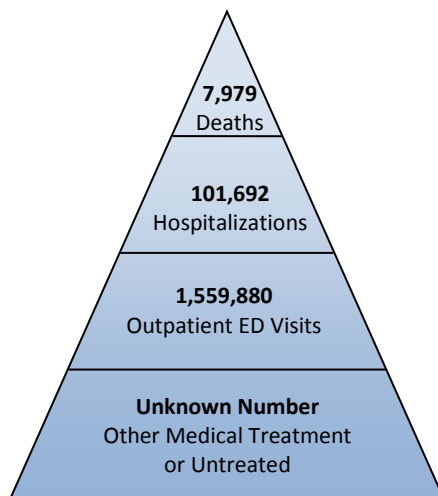
An injury affects more than just the person who was injured and may impact family members who are often called upon to care for the injured person. This can result in stress, time away from work and, sometimes, lost income. The economic impact of injuries includes the costs associated with medical treatment and lost

productivity, such as wages and accompanying fringe benefits, or the ability to perform one's normal household responsibilities. The combined medical and work loss costs for New Yorkers who died due to an injury in 2005 were over \$5 billion dollars.¹ Whereas the combined costs for those who were hospitalized for an injury in 2005 were over \$114 billion dollars.



What is the magnitude of the injury problem in NYS?

Incidence of Injury
New York State Residents, 2014



Injuries are a leading cause of death and disability among all age groups in NYS and are the top killer of New Yorkers aged 1 to 44². In 2014, nearly 8,000 New Yorkers died as a result of an injury – 22 every day. But injury deaths are only part of the picture. The consequences of non-fatal injuries range from temporary pain and inconvenience, to long-term disability, chronic pain, and a diminished quality of life.

Hospitalization and rehabilitation services are often needed. Injuries are consistently among the leading causes of hospitalization for New Yorkers of all age groups. Over 101,000 individuals (277 daily) were injured severely enough to require hospitalization. Another 1.5 million injured New Yorkers (4,274 daily) were treated and released

from an emergency department.

¹ Centers for Disease Control and Prevention. Data & Statistics (WISQARS): Cost of Injury Reports. *Web-based Injury Statistics Query and Reporting System (WISQARS)*. 2014. Available at: https://wisqars.cdc.gov:8443/costT/cost_Part1_Intro.jsp. Accessed September 2, 2016.

² Centers for Disease Control and Prevention. Data & Statistics (WISQARS): 10 Leading Causes of Death, New York 2014. *Web-based Injury Statistics Query and Reporting System (WISQARS)*. Available at: <http://webappa.cdc.gov/cgi-bin/broker.exe>. Accessed September 14, 2016.

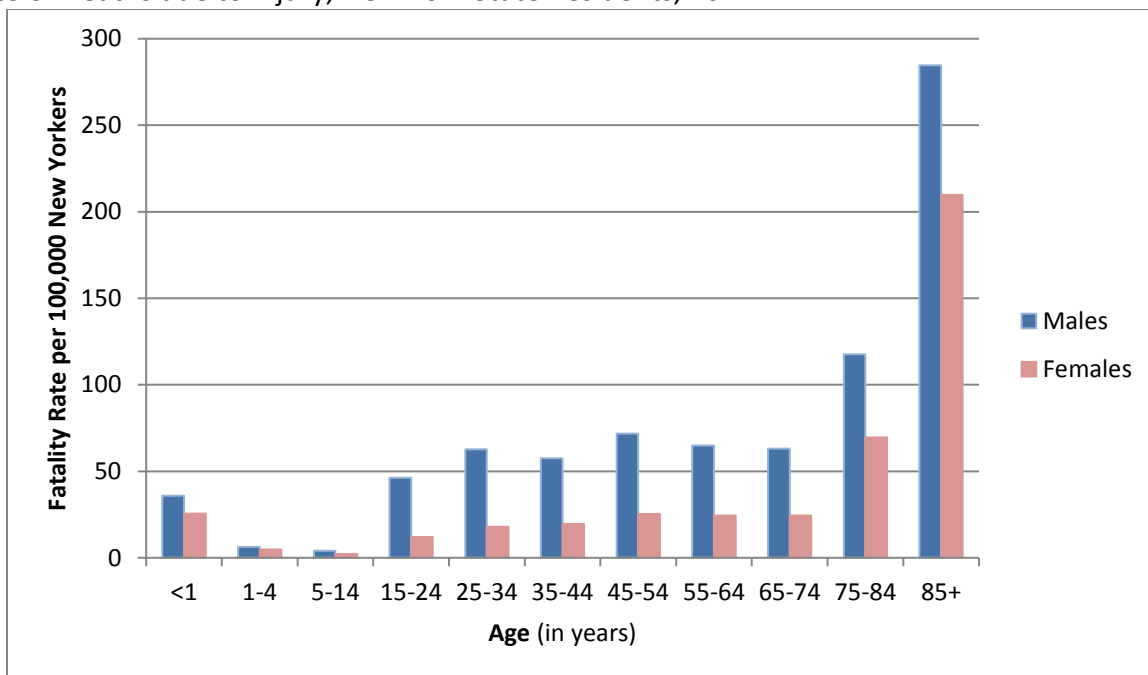
All Injuries -- 2014

Fatalities

Deaths due to Injury, New York State Residents, 2014

Age	All New Yorkers		Males		Females	
	Number of Deaths	Rate per 100,000	Number of Deaths	Rate per 100,000	Number of Deaths	Rate per 100,000
<1	74	30.9	44	35.9	30	25.6
1-4	52	5.5	30	6.2	22	4.8
5-14	74	3.2	49	4.1	25	2.2
15-24	793	29.3	632	46.2	161	12.0
25-34	1,144	40.2	887	62.6	257	18.0
35-44	958	38.2	709	57.6	249	19.5
45-54	1,337	47.9	974	71.8	363	25.3
55-64	1,094	43.8	775	64.9	319	24.4
65-74	672	42.0	459	63.1	213	24.4
75-84	775	89.4	422	117.5	353	69.5
85+	1,006	234.4	402	284.6	604	209.8
Total	7,979	40.4	5,383	56.2	2,596	25.5

Rate of Deaths due to Injury, New York State Residents, 2014



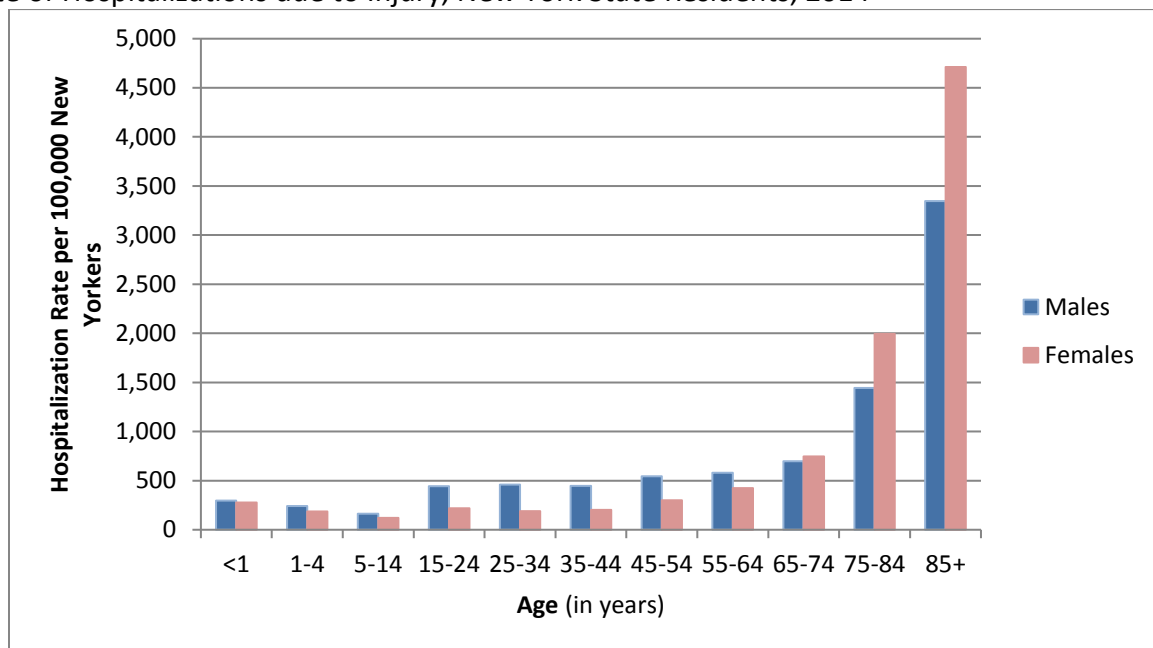
- In 2014, 7,979 New Yorkers died due to injuries.
- The rate of injury-related fatalities for males was more than twice that of females for most age groups.
- The rates of injury-related fatalities are highest among New Yorkers 75 years and older.

Hospitalizations

Hospitalizations due to Injury, New York State Residents, 2014

Age	All New Yorkers		Males		Females	
	Number of Hospitalizations	Rate per 100,000	Number of Hospitalizations	Rate per 100,000	Number of Hospitalizations	Rate per 100,000
<1	689	287.3	364	297.3	325	276.9
1-4	2,025	214.3	1,166	241.6	859	185.9
5-14	3,290	142.2	1,937	163.7	1,353	119.7
15-24	8,982	331.9	6,060	442.8	2,921	218.4
25-34	9,220	323.8	6,492	458.5	2,728	190.6
35-44	8,110	323.4	5,512	447.7	2,597	203.4
45-54	11,677	418.7	7,376	543.9	4,301	300.2
55-64	12,485	499.5	6,932	580.9	5,553	425.1
65-74	11,613	725.0	5,077	697.7	6,536	747.6
75-84	15,302	1,764.9	5,178	1,442.2	10,124	1,993.0
85+	18,299	4,263.7	4,729	3,347.8	13,570	4,713.0
Total³	101,692	515.0	50,823	530.4	50,867	500.4

Rate of Hospitalizations due to Injury, New York State Residents, 2014



- In 2014, 101,692 New Yorkers were hospitalized due to injuries.
- The rates of injury-related hospitalizations are highest among New Yorkers 65 years and older.
- Males had higher rates of injury-related hospitalizations in age categories 64 and under, while females had higher rates than males in age categories 65 years and older.

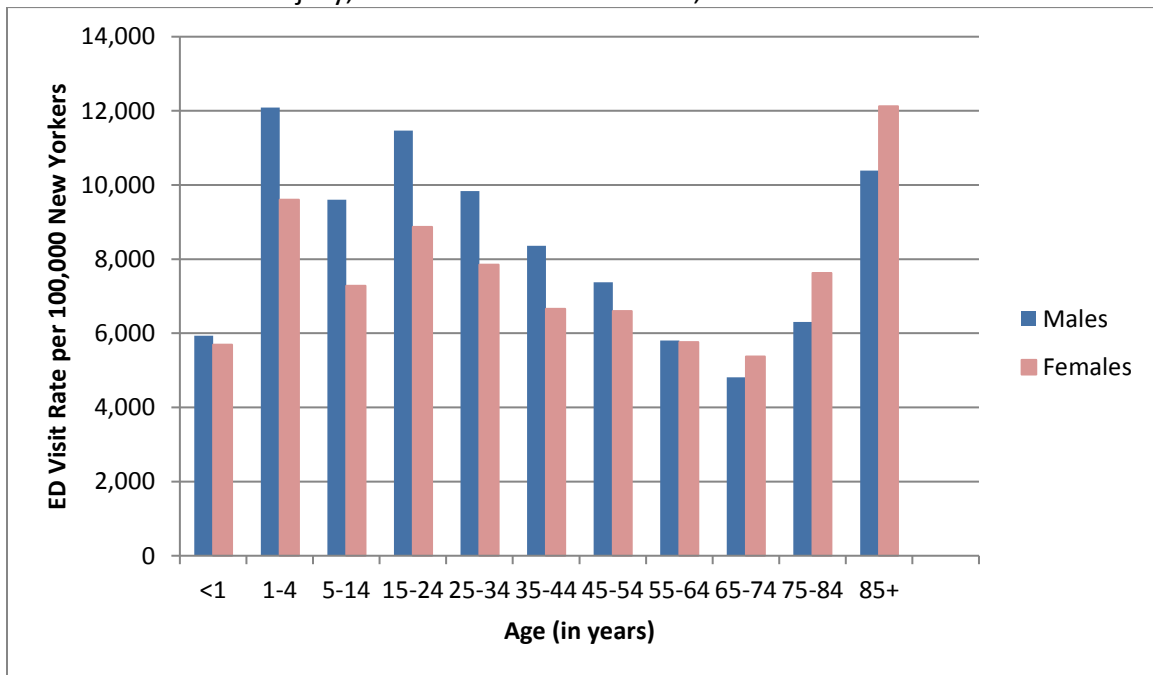
³ There are 2 people for which gender is unknown.

Emergency Department Visits

ED Visits due to Injury, New York State Residents, 2014

Age	All New Yorkers		Males		Females	
	Number of ED Visits	Rate per 100,000	Number of ED Visits	Rate per 100,000	Number of ED Visits	Rate per 100,000
<1	13,944	5,814.7	7,261	5,930.8	6,682	5,692.8
1-4	102,715	10,871.8	58,338	12,085.8	44,374	9,603.0
5-14	195,914	8,467.3	113,626	9,602.9	82,286	7,278.6
15-24	275,544	10,183.0	156,909	11,466.0	118,632	8,869.9
25-34	251,703	8,839.8	139,256	9,834.8	112,440	7,855.1
35-44	187,936	7,493.5	102,900	8,358.5	85,028	6,659.0
45-54	194,616	6,978.3	100,033	7,376.8	94,579	6,600.8
55-64	144,527	5,782.0	69,301	5,806.9	75,223	5,758.9
65-74	82,000	5,118.9	35,042	4,815.8	46,956	5,371.0
75-84	61,393	7,081.0	22,650	6,308.6	38,741	7,626.4
85+	49,588	11,554.1	14,671	10,386.0	34,917	12,127.2
Total⁴	1,559,880	7,899.6	819,987	8,558.2	739,858	7,278.5

Rate of ED Visits due to Injury, New York State Residents, 2014



- In 2014, 1,559,880 New Yorkers were treated in an ED due to injuries.
- The rates of injury-related ED visits are highest among female New Yorkers 85 years and older.

⁴ There are 35 people for which gender is unknown.

- For age groups 64 and under males were more likely to visit the ED for an injury, and for age groups 65 and older females were more likely.

Drowning and Near-Drowning Injuries -- 2014

Fatalities (unintentional only)

Drowning, New York State Residents, 2014

Age	All New Yorkers		Males		Females	
	Number of Deaths	Rate per 100,000	Number of Deaths	Rate per 100,000	Number of Deaths	Rate per 100,000
<1	0	0.0**				
1-4	8	0.8**				
5-14	6	0.3**				
15-24	16	0.6**				
25-34	14	0.5**				
35-44	10	0.4**				
45-54	13	0.5**				
55-64	13	0.5**				
65-74	11	0.7**				
75-84	10	1.2**				
85+	*	*				
Total	103	0.5				

- In 2014, 103 New Yorkers died due to drowning.
- The rate of drowning was four times higher for males than for females.

Notes:

- Due to low numbers, male and female frequencies and rates by age have been withheld.
- Due to the instability of rates for males and females, the chart for this section depicting rates of unintentional fatal drownings has been withheld.

Hospitalizations (includes intentional, unintentional, and undetermined intent)

Hospitalizations due to Near-Drowning, New York State Residents, 2014

Age	All New Yorkers		Males		Females	
	Number of Hospitalizations	Rate per 100,000	Number of Hospitalizations	Rate per 100,000	Number of Hospitalizations	Rate per 100,000
<1	*	*	/	/	/	/
1-4	18	1.9**				
5-14	19	0.8**				
15-24	11	0.4**				
25-34	8	0.3**				
35-44	*	*				
45-54	*	*				
55-64	*	*				
65-74	7	0.4**				
75-84	*	*				
85+	0	0.0**				
Total	83	0.4				

- In 2014, 83 New Yorkers were hospitalized due to near drowning incidents.
- The rates of near drowning-related hospitalizations are highest among New Yorkers 1-4 years old.

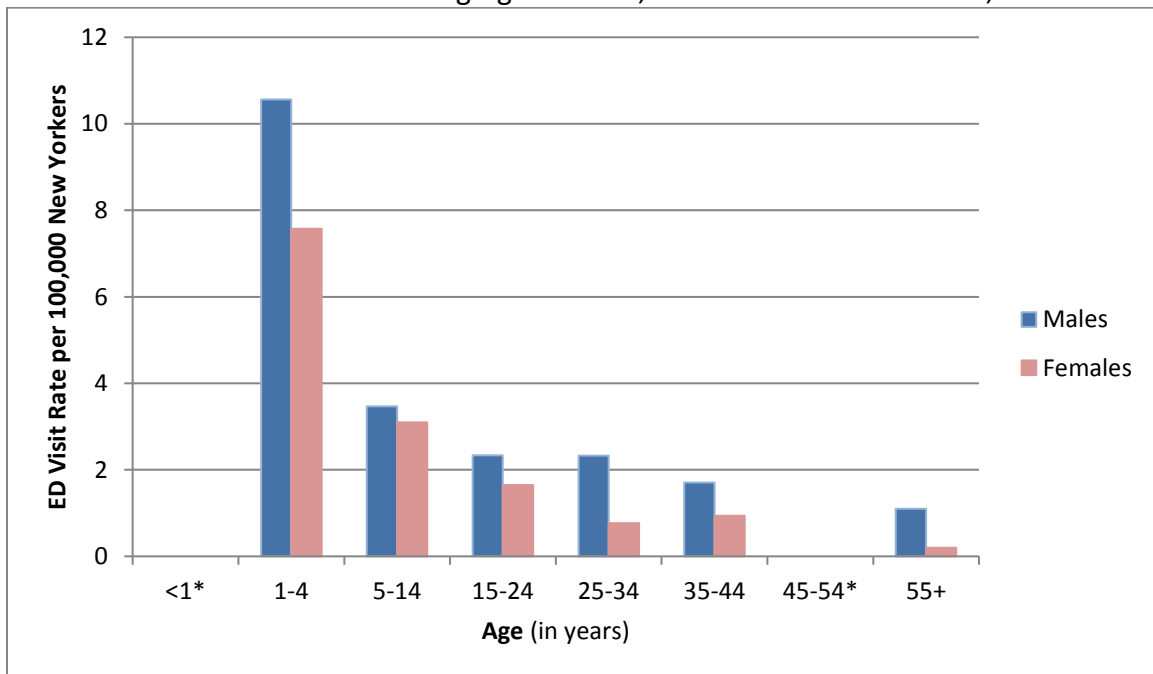
Notes:
-Due to low numbers, male and female frequencies and rates by age have been withheld.
-Due to the instability of rates for males and females, the chart for this section depicting rates of unintentional fatal drownings has been withheld.

Emergency Department Visits (includes intentional, unintentional, and undetermined intent)

ED Visits due to Near-Drowning, New York State Residents, 2014

Age	All New Yorkers		Males		Females	
	Number of ED Visits	Rate per 100,000	Number of ED Visits	Rate per 100,000	Number of ED Visits	Rate per 100,000
<1	9	3.8**	*	*	*	*
1-4	86	9.1	51	10.6	35	7.6
5-14	76	3.3	41	3.5	35	3.1
15-24	54	2.0	32	2.3	22	1.6
25-34	44	1.5	33	2.3	11	0.8**
35-44	33	1.3	21	1.7	12	0.9**
45-54	19	0.7**	*	*	*	*
55+	34	0.6	27	1.1	7	0.2**
Total	355	1.7	224	2.3	131	1.3

Rate of ED Visits due to Near-Drowning Ages 1 to 44, New York State Residents, 2014



- In 2014, 355 New Yorkers were treated in an ED due to near-drowning incidents.
- The rates of near-drowning incident-related ED visits are highest among New Yorkers one to four years old.
- Men had the highest rates of near drowning-related ED visits.

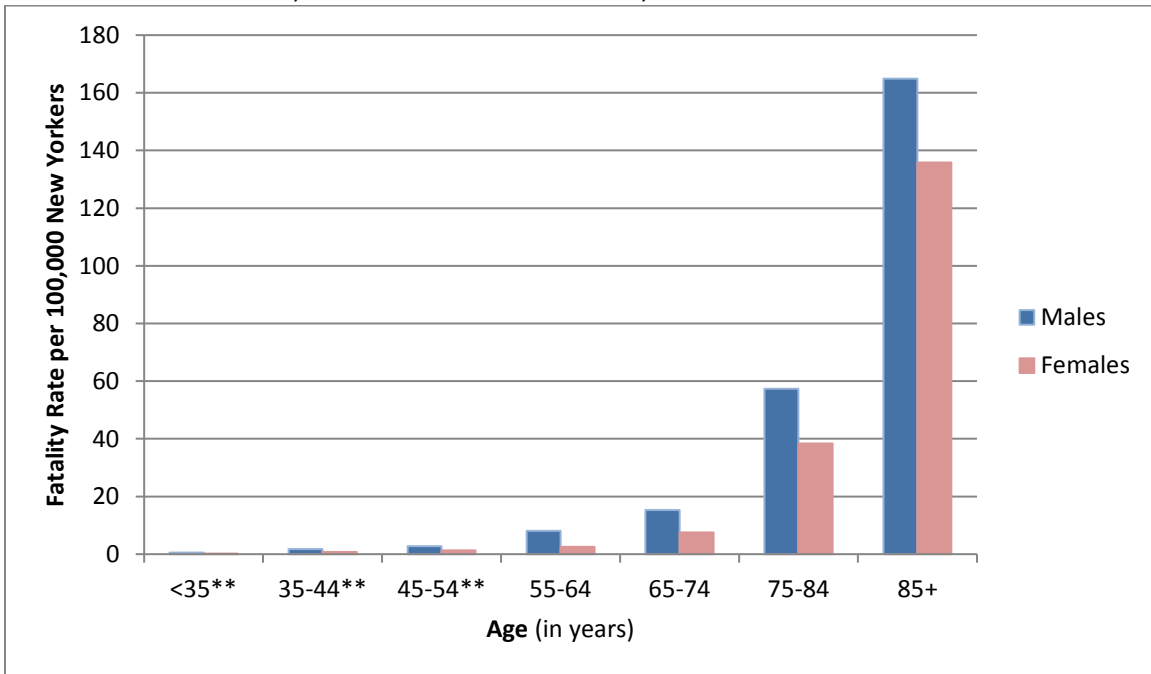
Unintentional Fall-Related Injuries -- 2014

Fatalities

Deaths due to Falls, New York State Residents, 2014

Age	All New Yorkers		Males		Females	
	Number of Deaths	Rate per 100,000	Number of Deaths	Rate per 100,000	Number of Deaths	Rate per 100,000
<35	33	0.4	25	0.5	8	0.2**
35-44	32	1.3	22	1.8	10	0.8**
45-54	57	2.0	38	2.8	19	1.3**
55-64	131	5.2	97	8.1	34	2.6
65-74	177	11.0	111	15.3	66	7.5
75-84	401	46.3	206	57.4	195	38.4
85+	624	145.4	233	164.9	391	135.8
Total	1,455	7.4	732	7.6	723	7.1

Rate of Death due to Falls, New York State Residents, 2014



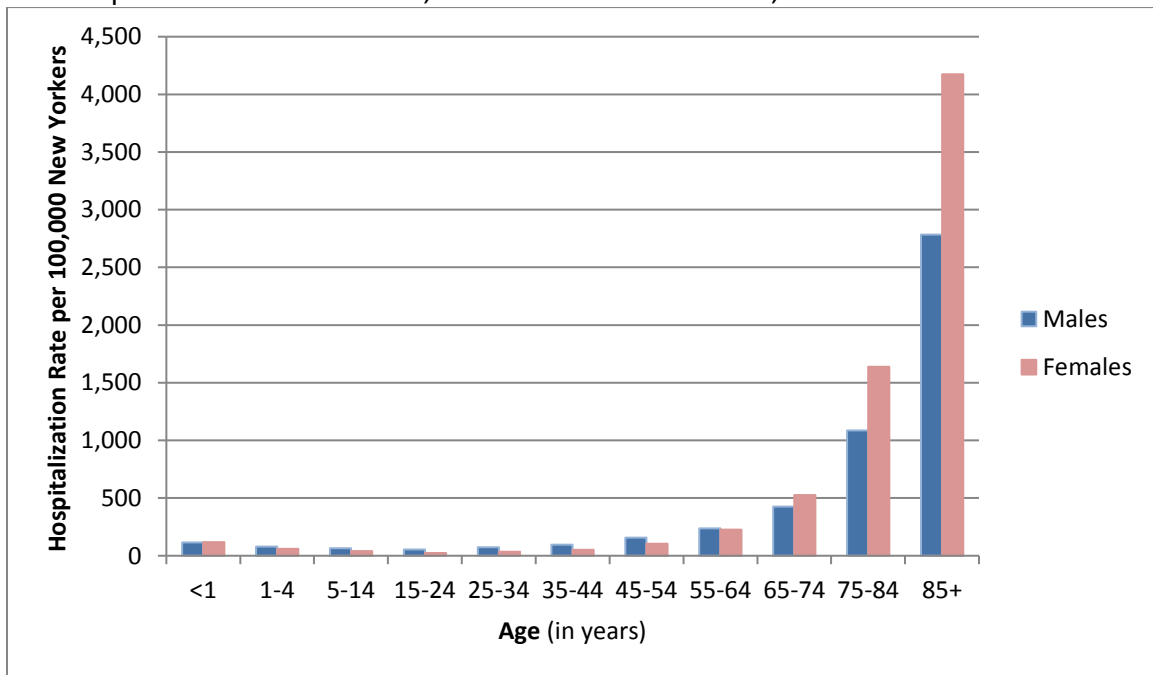
- In 2014, 1,455 New Yorkers died from fall-related injuries.
- The fatality rate for adults 85 and older was 19 times higher than the rate for the state as a whole.
- Very few fall-related fatalities occurred in New Yorkers below the age of 35.
- Death rates were higher for males compared with females in all age groups.

Hospitalizations

Hospitalizations due to Falls, New York State Residents, 2014

Age	All New Yorkers		Males		Females	
	Number of Hospitalizations	Rate per 100,000	Number of Hospitalizations	Rate per 100,000	Number of Hospitalizations	Rate per 100,000
<1	281	117.2	142	116.0	139	118.4
1-4	662	70.1	379	78.5	283	61.2
5-14	1,209	52.3	759	64.1	450	39.8
15-24	1,067	39.4	758	55.4	309	23.1
25-34	1,539	54.0	1,035	73.1	504	35.2
35-44	1,818	72.5	1,177	95.6	641	50.2
45-54	3,608	129.4	2,127	156.9	1,481	103.4
55-64	5,796	231.9	2,846	238.5	2,950	225.8
65-74	7,700	480.7	3,103	426.4	4,597	525.8
75-84	12,216	1,409.0	3,899	1,086.0	8,317	1,637.3
85+	15,956	3,717.8	3,934	2,785.0	12,022	4,175.4
Total	51,852	262.6	20,159	210.4	31,693	311.8

Rate of Hospitalizations due to Falls, New York State Residents, 2014



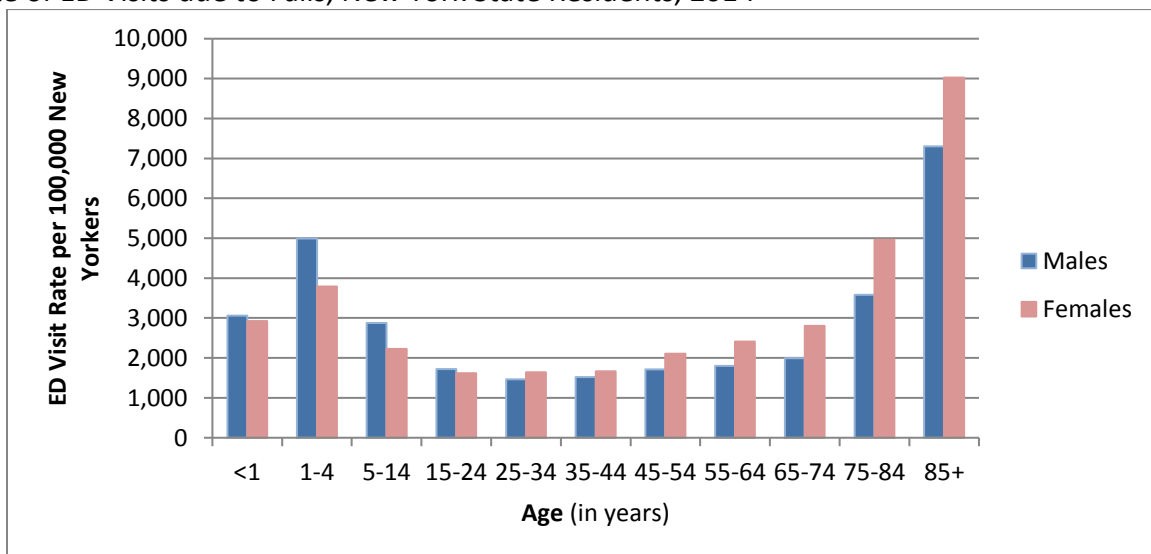
- In 2014, 51,852 New Yorkers were hospitalized due to fall-related injuries.
- The rates of fall-related hospitalizations are highest among New Yorkers 65 and older.
- Females aged 65 and older had higher rates of fall-related hospitalizations than males of the same age group.
- The rate of falls among females over 85 years of age was 50.2% larger than the rate for males.

Emergency Department Visits

ED Visits due to Falls, New York State Residents, 2014

Age	All New Yorkers		Males		Females	
	Number of ED Visits	Rate per 100,000	Number of ED Visits	Rate per 100,000	Number of ED Visits	Rate per 100,000
<1	7,176	2,992.4	3,748	3,061.4	3,427	2,919.7
1-4	41,623	4,405.5	24,108	4,994.4	17,514	3,790.2
5-14	59,173	2,557.4	34,046	2,877.3	25,127	2,222.6
15-24	45,132	1,667.9	23,560	1,721.6	21,571	1,612.8
25-34	44,181	1,551.6	20,692	1,461.4	23,489	1,640.9
35-44	39,974	1,593.9	18,734	1,521.8	21,239	1,663.3
45-54	53,352	1,913.0	23,207	1,711.4	30,144	2,103.8
55-64	52,926	2,117.4	21,452	1,797.5	31,473	2,409.5
65-74	39,030	2,436.5	14,524	1,996.0	24,504	2,802.8
75-84	38,069	4,390.8	12,861	3,582.1	25,207	4,962.2
85+	36,311	8,460.5	10,317	7,303.7	25,994	9,028.1
Total⁵	456,947	2,314	207,249	2163.1	249,689	2,456.4

Rate of ED Visits due to Falls, New York State Residents, 2014



- In 2014, 456,947 New Yorkers were treated in an ED due to fall-related injuries.
- The rates of fall-related ED visits are highest among New Yorkers 1-4 years old and 75 and older.
- For age categories 0 to 24, males had higher rates of fall-related ED visits, for ages 25 and above females had higher rates.
- Although males have higher rates of fall related deaths, females have higher rates of fall-related hospitalizations and ED visits.

⁵ There are 9 people for which gender is unknown.

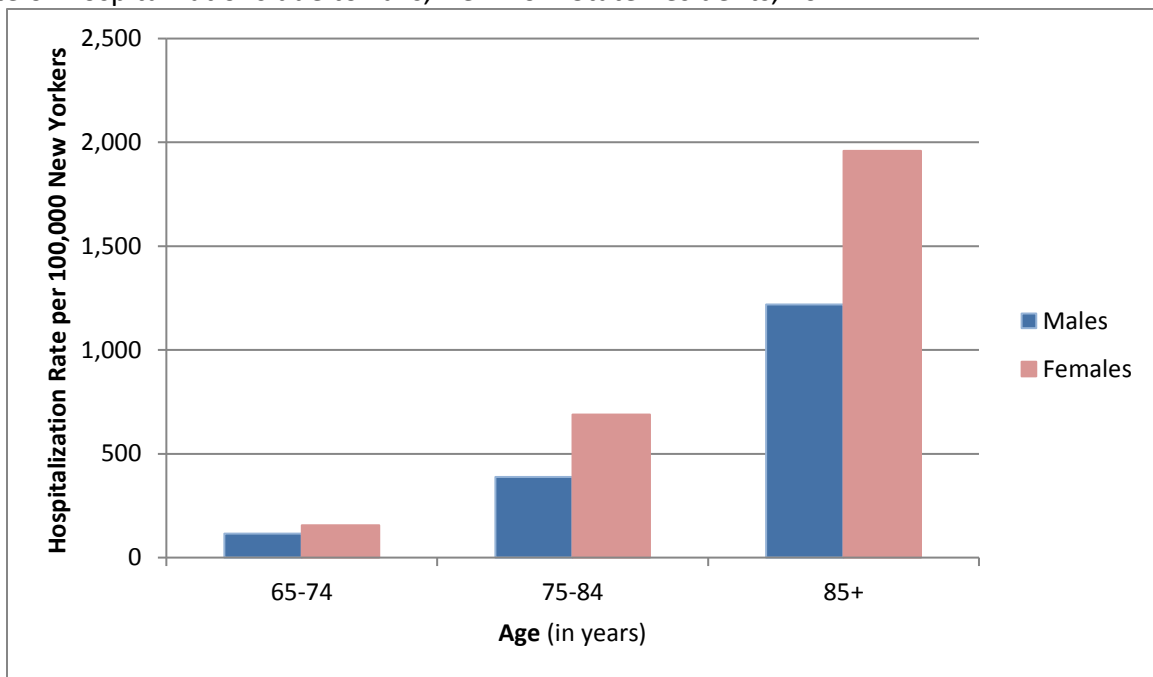
Hip Fractures Among Older New Yorkers -- 2014

Hospitalizations

Hospitalizations with a Hip Fracture Diagnosis, New York State Residents, 65 and Older, 2014

Age	All New Yorkers		Males		Females	
	Number of Hospitalizations	Rate per 100,000	Number of Hospitalizations	Rate per 100,000	Number of Hospitalizations	Rate per 100,000
65-74	2,201	137.4	840	115.4	1,361	155.7
75-84	4,895	564.6	1,392	387.7	3,503	689.6
85+	7,363	1,715.6	1,723	1,219.8	5,640	1,958.9
Total	14,459	498.9	3,955	322.1	10,504	628.9

Rate of Hospitalizations due to Falls, New York State Residents, 2014



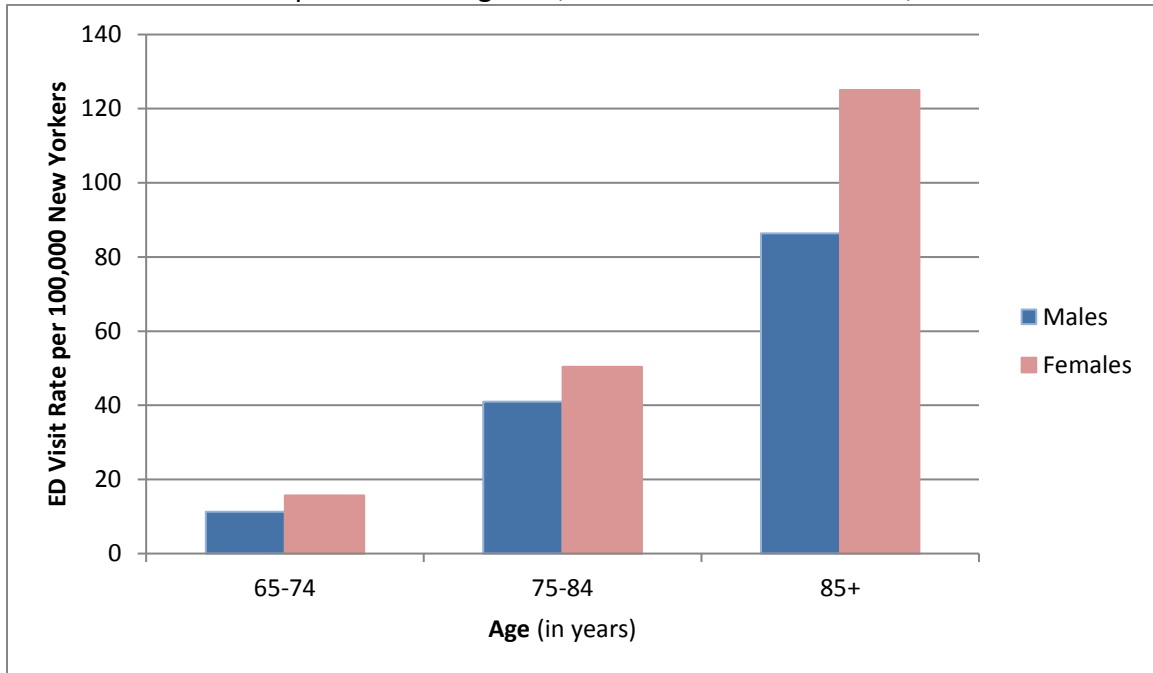
- In 2014, 14,459 older New Yorkers were hospitalized due to a hip fracture.
- The rates of hip fracture hospitalizations were highest among New Yorkers 85 and older, the hospitalization is over 12 times higher for adults 85 and older than for those 65-74 years.
- Among New Yorkers, 75 and older, the rate of hospitalization with a hip fracture is twice as high for females as for males.

Emergency Department Visits

ED Visits with a Hip Fracture Diagnosis, New York State Residents, 65 and Older 2014

Age	All New Yorkers		Males		Females	
	Number of ED Visits	Rate per 100,000	Number of ED Visits	Rate per 100,000	Number of ED Visits	Rate per 100,000
65-74	219	13.7	82	11.3	137	15.7
75-84	403	46.5	147	40.9	256	50.4
85+	482	112.3	122	86.4	360	125.0
Total	1,104	38.1	351	28.6	753	45.1

Rate of ED Visits with a Hip Fracture Diagnosis, New York State Residents, 65 and Older 2014



- In 2014, 1,104 older New Yorkers were diagnosed with a hip fracture in an ED.
- The rates of ED diagnosed hip fracture were highest among New Yorkers 85 and older; it was eight times higher for adults 85 and older than for those 65-74 years.
- Among New Yorkers, 65 and older, the rate of hip fracture diagnosed at an ED was 1.5 times as high for females compared to males.

Unintentional Fire-Related Injuries -- 2014

Fatalities

Deaths due to Unintentional Fire-Related Injuries, New York State Residents, 2014

Age	All New Yorkers		Males		Females	
	Number of Deaths	Rate per 100,000	Number of Deaths	Rate per 100,000	Number of Deaths	Rate per 100,000
<1	*	*				
1-4	7	0.7**				
5-14	7	0.3**				
15-24	6	0.2**				
25-34	10	0.4**				
35-44	9	0.4**				
45-54	19	0.7**				
55-64	23	0.9				
65-74	18	1.1**				
75-84	18	2.1**				
85+	22	5.1				
Total	140	0.7				

- In 2014, 140 New Yorkers died from unintentional fire-related injuries.
- The fatality rate for adults 85 and older was seven times higher than the rate for the state as a whole.

Notes:

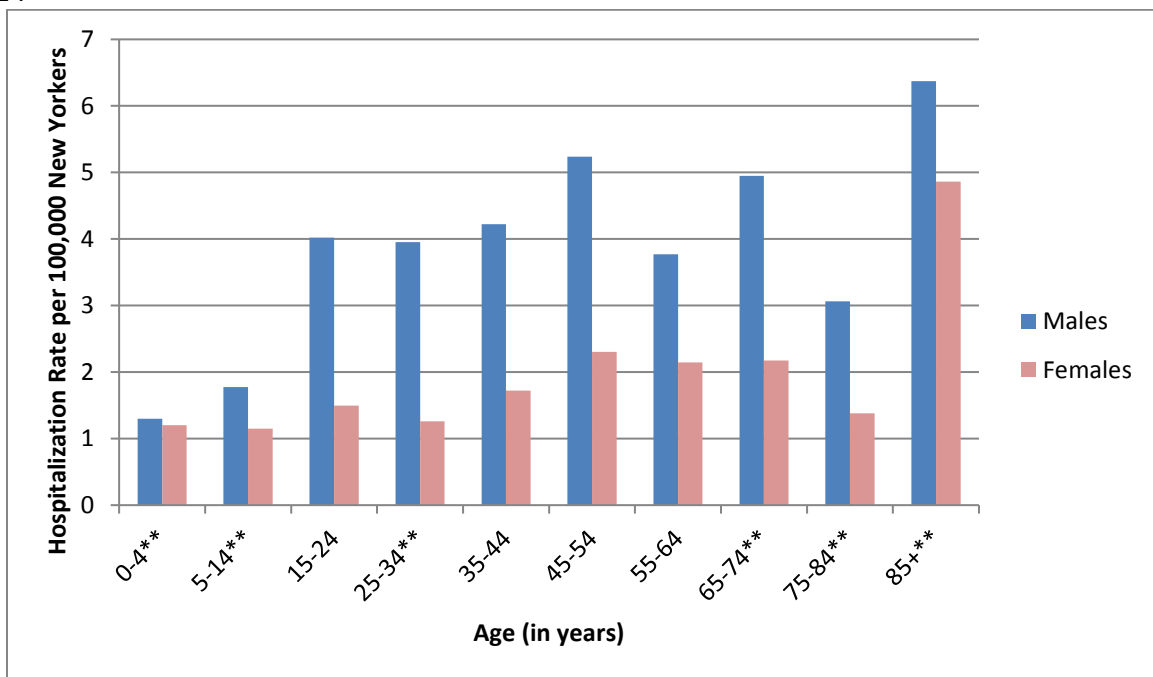
-Due to low numbers, male and female frequencies and rates by age have been withheld.
 -Due to the instability of rates for males and females, the chart for this section depicting rates of unintentional fire-related fatalities has been withheld.

Hospitalizations

Hospitalizations due to Unintentional Fire-Related Injuries, New York State Residents, 2014

Age	All New Yorkers		Males		Females	
	Number of Hospitalizations	Rate per 100,000	Number of Hospitalizations	Rate per 100,000	Number of Hospitalizations	Rate per 100,000
0-4	16	**1.3	9	**1.5	7	1.2**
5-14	34	1.5	21	1.8	13	1.1**
15-24	75	2.8	55	4.0	20	1.5
25-34	74	2.6	56	4.0	18	1.3**
35-44	74	3.0	52	4.2	22	1.7
45-54	104	3.7	71	5.2	33	2.3
55-64	73	2.9	45	3.8	28	2.1
65-74	55	3.4	36	4.9	19	2.2**
75-84	18	2.1**	11	3.1**	7	1.4**
85+	23	5.4	9	6.4**	14	4.9**
Total	546	2.8	365	3.8	181	1.8

Rate of Hospitalizations due to Unintentional Fire-Related Injuries, New York State Residents, 2014



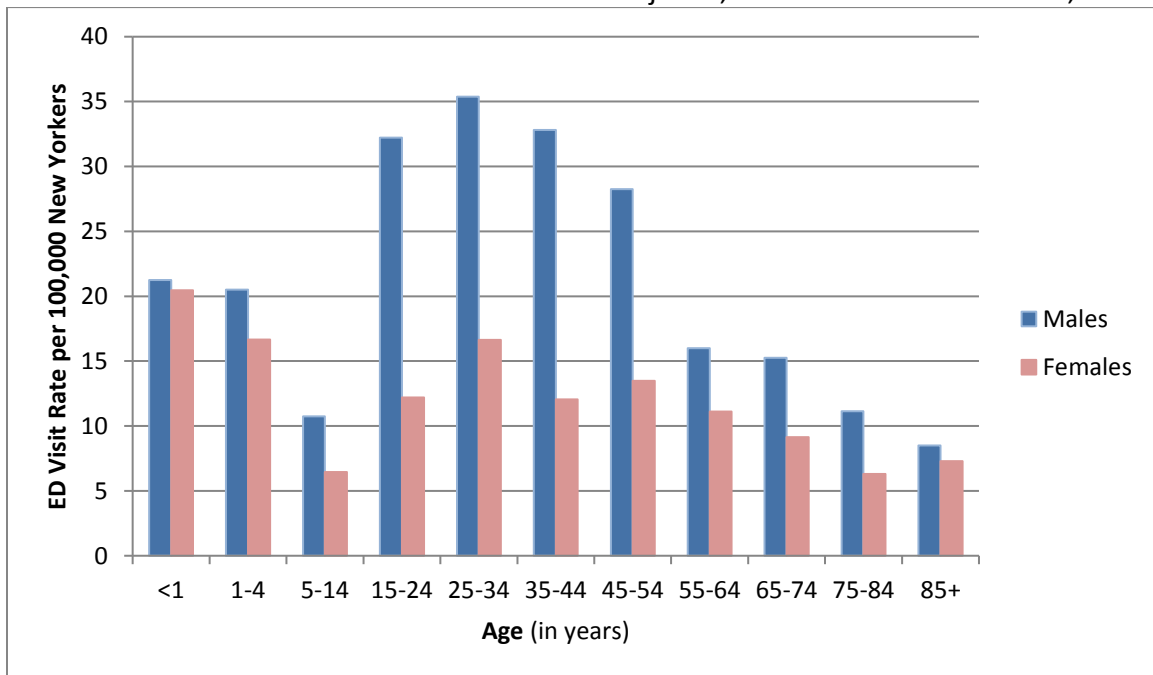
- In 2014, 546 New Yorkers were hospitalized due to unintentional fire-related injuries.
- Males have higher rates of unintentional fire-related hospitalizations in every age group.
- The rates of unintentional fire-related hospitalizations are highest among New Yorkers ages 45 to 54 and 85 and older.

Emergency Department Visits

ED Visits due to Unintentional Fire-Related Injuries, New York State Residents, 2014

Age	All New Yorkers		Males		Females	
	Number of ED Visits	Rate per 100,000	Number of ED Visits	Rate per 100,000	Number of ED Visits	Rate per 100,000
<1	50	20.9	26	21.2	24	20.4
1-4	176	18.6	99	20.5	77	16.7
5-14	200	8.6	127	10.7	73	6.5
15-24	604	22.3	441	32.2	163	12.2
25-34	739	26.0	501	35.4	238	16.6
35-44	558	22.2	404	32.8	154	12.1
45-54	576	20.7	383	28.2	193	13.5
55-64	336	13.4	191	16.0	145	11.1
65-74	191	11.9	111	15.3	80	9.2
75-84	72	8.3	40	11.1	32	6.3
85+	33	7.7	12	8.5	21	7.3
Total	3,535	17.9	2,335	24.3	1,200	11.8

Rate of ED Visits due to Unintentional Fire-Related Injuries, New York State Residents, 2014



- In 2014, 3,535 New Yorkers were treated in an ED due to unintentional fire-related injuries.
- The rates of ED visits due to unintentional fire-related injuries are highest among male New Yorkers 15-44 years old.
- Overall, the rate of ED visits due to unintentional fire-related injuries is twice as high for males as for females.

Firearm-Related Injuries – 2014

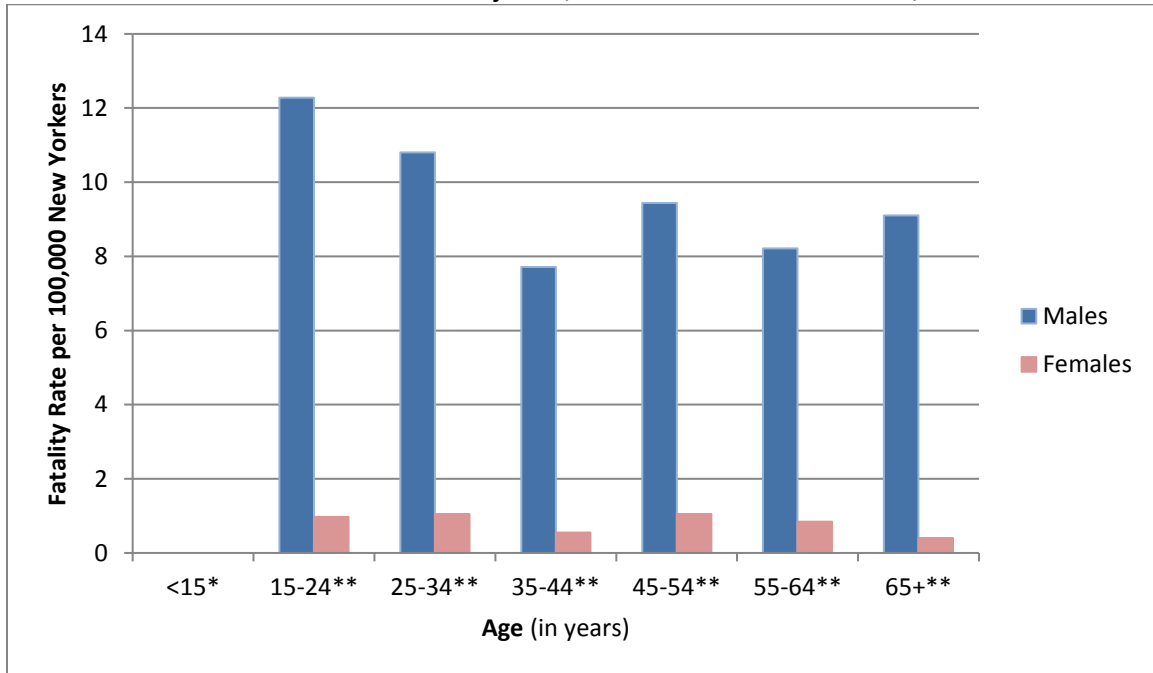
(includes intentional, unintentional, and undetermined intent)

Fatalities

Deaths due to Firearm-Related Injuries, New York State Residents, 2014

Age	All New Yorkers		Males		Females	
	Number of ED Visits	Rate per 100,000	Number of ED Visits	Rate per 100,000	Number of ED Visits	Rate per 100,000
<15	*	*	*	*	*	*
15-24	181	6.7	168	12.3	13	1.0**
25-34	168	5.9	153	10.8	15	1.0**
35-44	102	4.1	95	7.7	7	0.5**
45-54	143	5.1	128	9.4	15	1.0**
55-64	109	4.4	98	8.2	11	0.8**
65+	119	4.1	112	9.1	7	0.4**
Total	825	4.2	757	7.9	68	0.7

Rate of Deaths due to Firearm-Related Injuries, New York State Residents, 2014



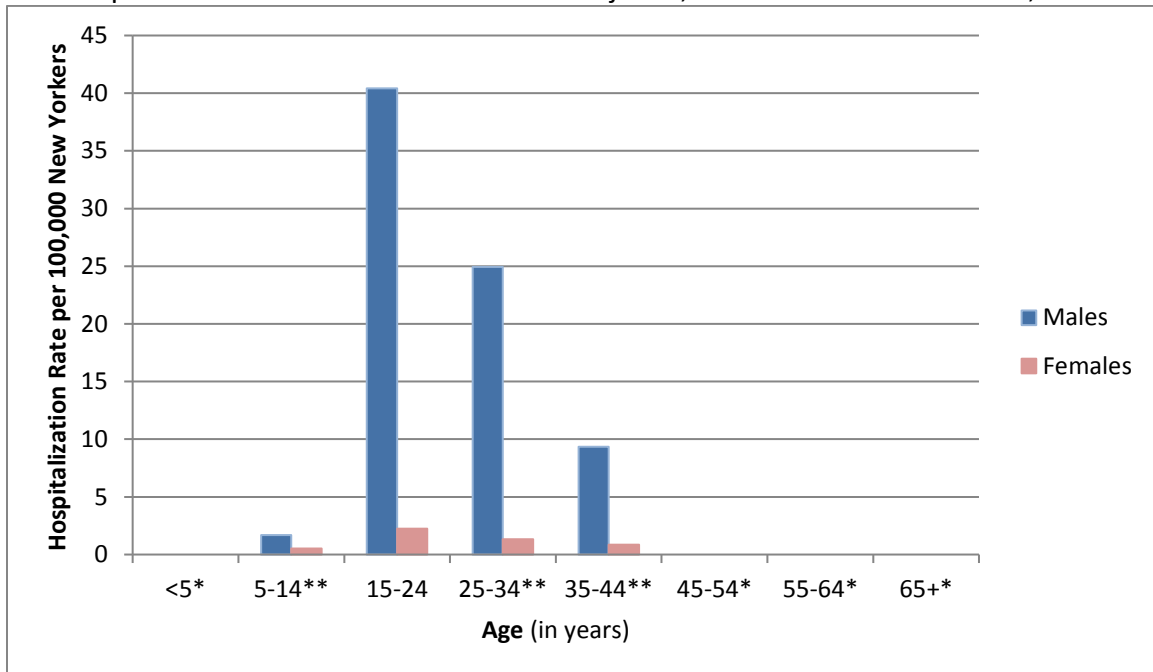
- In 2014, 825 New Yorkers died from firearm-related injuries.
- The fatality rate for males is 13 times higher than that for females, with males accounting for 92% of all firearm-related deaths.
- The highest rates are among males, 15-24 years old.

Hospitalizations

Hospitalizations due to Firearm-Related Injuries, New York State Residents, 2014

Age	All New Yorkers		Males		Females	
	Number of Deaths	Rate per 100,000	Number of Deaths	Rate per 100,000	Number of Deaths	Rate per 100,000
<5	*	*	*	*	*	*
5-14	26	1.1	20	1.7	6	0.5**
15-24	584	21.6	553	40.4	30	2.2
25-34	372	13.1	353	24.9	19	1.3**
35-44	126	5.0	115	9.3	11	0.9**
45-54	70	2.5	*	*	*	*
55-64	39	1.6	*	*	*	*
65+	16	0.5**	*	*	*	*
Total	1,236⁶	6.2	1,159	12.1	76	0.7

Rate of Hospitalizations due to Firearm-Related Injuries, New York State Residents, 2014



- In 2014, 1,236 New Yorkers were hospitalized due to firearm-related injuries.
- The rates of firearm-related hospitalizations are 13 times higher for males than females, with males accounting for 94% of firearm related hospitalizations.
- The highest rates were among males 15-24 years old.

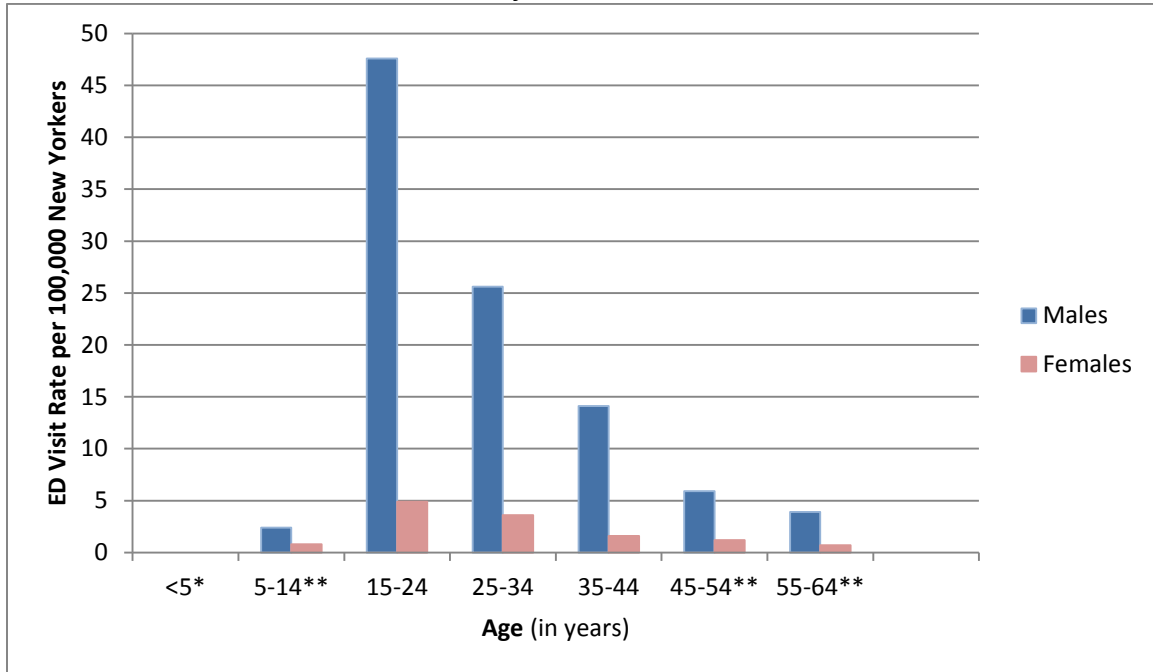
⁶ There is 1 person for which gender is unknown

Emergency Department Visits

ED Visits due to Firearm-Related Injuries, New York State Residents, 2014

Age	All New Yorkers		Males		Females	
	Number of ED Visits	Rate per 100,000	Number of ED Visits	Rate per 100,000	Number of ED Visits	Rate per 100,000
<5	*	*	*	*	*	*
5-14	37	1.6	28	2.4	9	0.8**
15-24	717	26.5	652	47.6	65	4.9
25-34	415	14.6	363	25.6	52	3.6
35-44	195	7.8	174	14.1	21	1.6
45-54	97	3.5	80	5.9	17	1.2**
55-64	55	2.2	46	3.9	9	0.7**
65+	39	1.3	*	*	*	*
Total	1,558	7.9	1,379	14.4	179	1.8

Rate of ED Visits due to Firearm-Related Injuries, New York State Residents, 2014



- In 2014, 1,558 New Yorkers were treated in an ED due to firearm-related injuries.
- Overall, the rate of ED visits due to firearm-related injuries is 8 times as high for males as for females, with males accounting for 89% of all firearm related emergency department visits.
- The rates of ED visits due to firearm-related injuries are highest among male New Yorkers 15-24 years old.

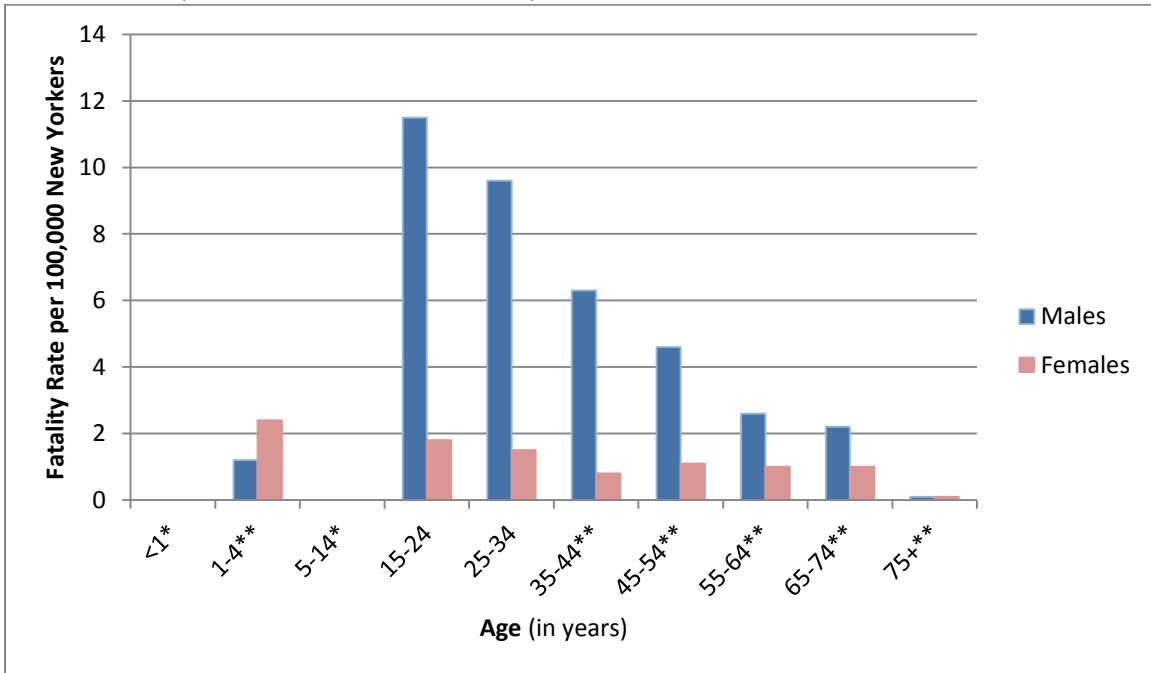
Homicide and Assault-Related Injuries -- 2014

Fatalities

Homicides, New York State Residents, 2014

Age	All New Yorkers		Males		Females	
	Number of Deaths	Rate per 100,000	Number of Deaths	Rate per 100,000	Number of Deaths	Rate per 100,000
<1	7	2.9	*	*	*	*
1-4	17	1.8	6	1.2**	11	2.4**
5-14	13	0.6	*	*	*	*
15-24	181	6.7	157	11.5	24	1.8
25-34	157	5.5	136	9.6	21	1.5
35-44	88	3.5	78	6.3	10	0.8**
45-54	79	2.8	63	4.6	16	1.1**
55-64	44	1.8	31	2.6	13	1.0**
65-74	25	1.6	16	2.2**	9	1.0**
75+	16	0.1	7	0.1**	9	0.1**
Total	627	3.2	509	5.3	118	1.2

Rate of Homicide, New York State Residents, 2014



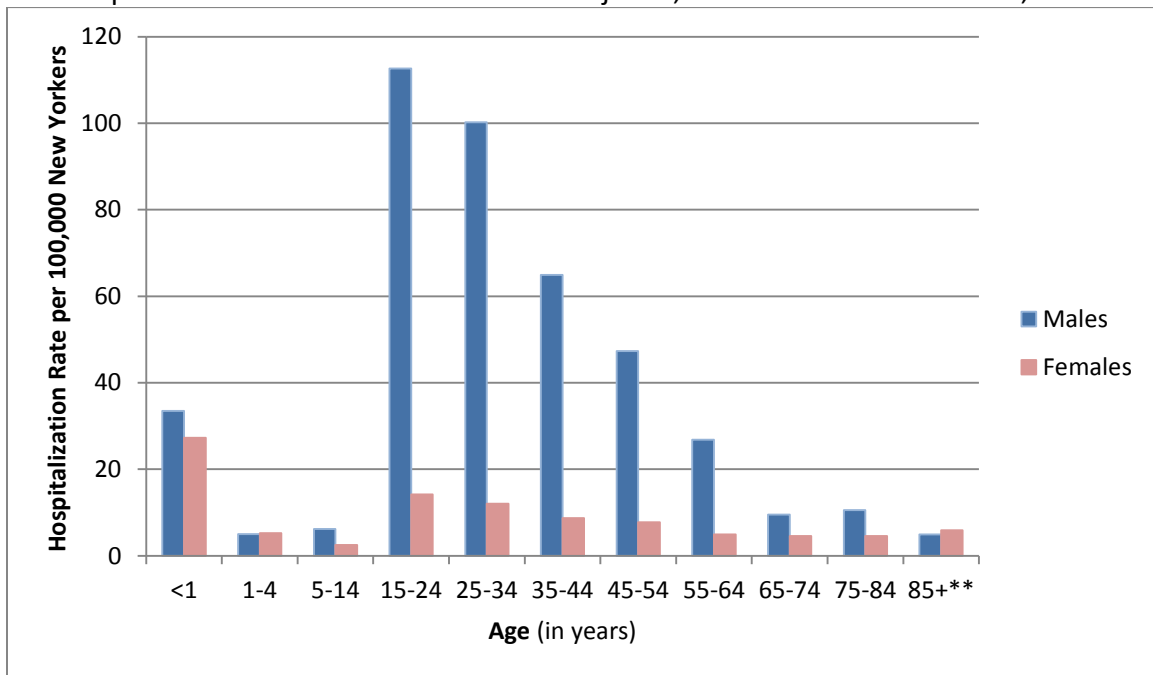
- In 2014, 627 New Yorkers died who were victims of homicide.
- The homicide rate for males was almost five times higher than that for females.
- The highest homicide rates were among males 15-24 years old.

Hospitalizations

Hospitalizations due to Assault-Related Injuries, New York State Residents, 2014

Age	All New Yorkers		Males		Females	
	Number of Hospitalizations	Rate per 100,000	Number of Hospitalizations	Rate per 100,000	Number of Hospitalizations	Rate per 100,000
<1	73	30.4	41	33.5	32	27.3
1-4	48	5.1	24	5.0	24	5.2
5-14	101	4.4	73	6.2	28	2.5
15-24	1,732	64.0	1,542	112.7	190	14.2
25-34	1,591	55.9	1,419	100.2	172	12.0
35-44	910	36.3	799	64.9	111	8.7
45-54	753	27.0	642	47.3	111	7.7
55-64	384	15.4	320	26.8	64	4.9
65-74	109	6.8	69	9.5	40	4.6
75-84	61	7.0	38	10.6	23	4.5
85+	24	5.6	7	5.0**	17	5.9**
Total	5,786	29.3	4,974	51.9	812	8.0

Rate of Hospitalizations due to Assault-Related Injuries, New York State Residents, 2014



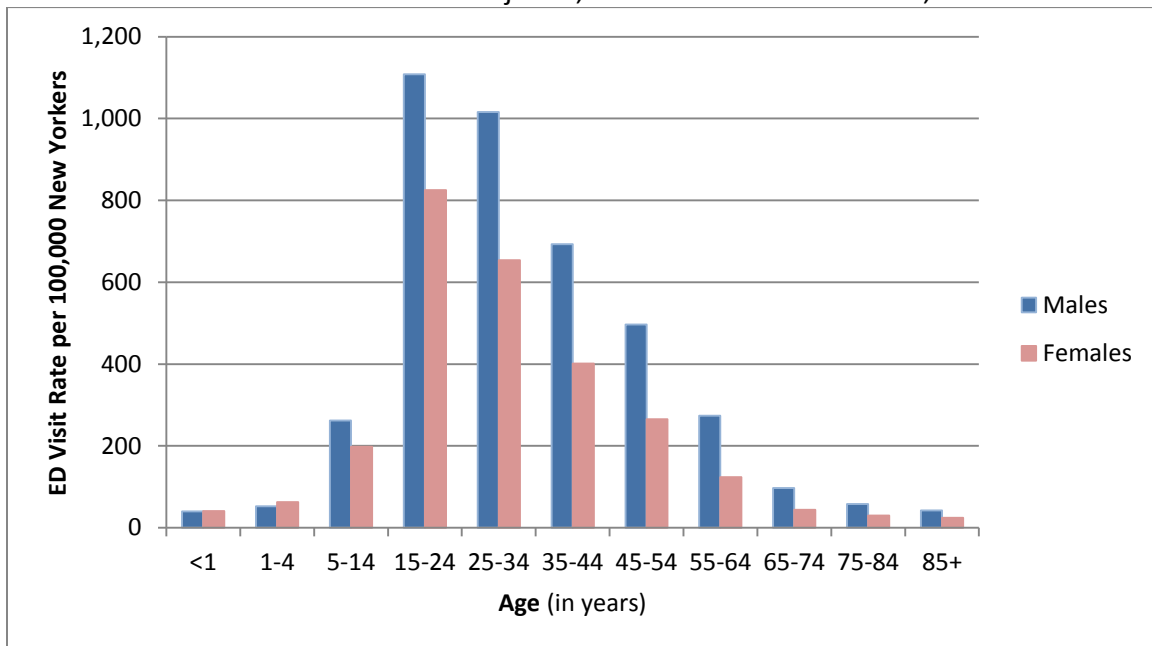
- In 2014, 5,786 New Yorkers were hospitalized due to assault-related injuries.
- Overall, the rates of assault-related hospitalizations are six times higher for males than females.
- The highest hospitalization rates for victims of assault were among males 15-34 years old.

Emergency Department Visits

ED Visits due to Assault-Related Injuries, New York State Residents, 2014

Age	All New Yorkers		Males		Females	
	Number of ED Visits	Rate per 100,000	Number of ED Visits	Rate per 100,000	Number of ED Visits	Rate per 100,000
<1	97	40.4	49	40.0	48	40.9
1-4	545	57.7	254	52.6	291	63.0
5-14	5,341	230.8	3,100	262.0	2,241	198.2
15-24	26,195	968.1	15,163	1108.0	11,031	824.8
25-34	23,749	834.1	14,385	1015.9	9,363	654.1
35-44	13,651	544.3	8,527	692.6	5,123	401.2
45-54	10,541	378.0	6,739	497.0	3,802	265.3
55-64	4,886	195.5	3,268	273.8	1,618	123.9
65-74	1,091	68.1	708	97.3	383	43.8
75-84	361	41.6	209	58.2	152	29.9
85+	131	30.5	60	42.5	71	24.7
Total⁷	86,588	438.5	52,462	547.5	34,123	335.7

Rate of ED Visits due to Assault-Related Injuries, New York State Residents, 2014



- In 2014, 86,588 New Yorkers were treated in an ED due to assault-related injuries.
- The rates of ED visits due to assault-related injuries are highest among New Yorkers 15-24 years old.
- The rate of ED visits due to assault-related injuries is 48% higher for males than for females.

⁷ There are 3 people for which gender is unknown.

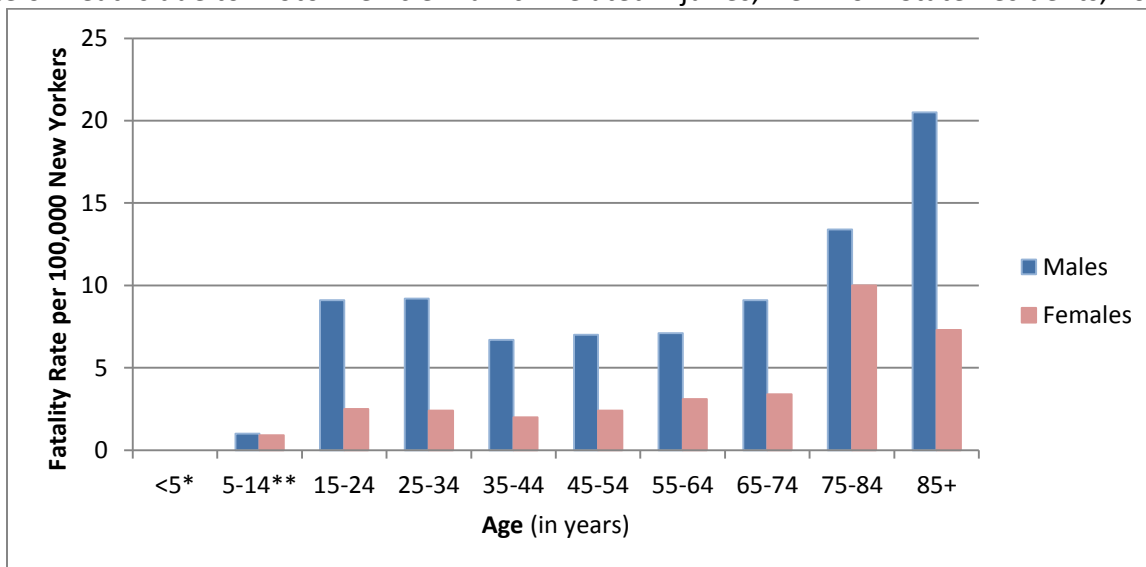
Unintentional Motor Vehicle Traffic-Related Injuries -- 2014

Fatalities

Deaths due to Motor Vehicle Traffic-Related Injuries⁸, New York State Residents, 2014

Age	All New Yorkers		Males		Females	
	Number of Deaths	Rate per 100,000	Number of Deaths	Rate per 100,000	Number of Deaths	Rate per 100,000
>5	*	*	*	*	*	*
5-14	22	1.0	12	1.0**	10	0.9**
15-24	159	5.9	125	9.1	34	2.5
25-34	165	5.8	130	9.2	35	2.4
35-44	108	4.3	82	6.7	26	2.0
45-54	129	4.6	95	7.0	34	2.4
55-64	125	5.0	85	7.1	40	3.1
65-74	96	6.0	66	9.1	30	3.4
75-84	99	11.4	48	13.4	51	10.0
85+	50	11.7	29	20.5	21	7.3
Total	958	4.9	676	7.1	282	2.8

Rate of Deaths due to Motor Vehicle Traffic - Related Injuries, New York State Residents, 2014



- In 2014, 958 New Yorkers died from motor vehicle traffic-related injuries.
- The fatality rate for males was 2.5 times higher for males than for females.
- The highest fatality rates were among those 75 and older.

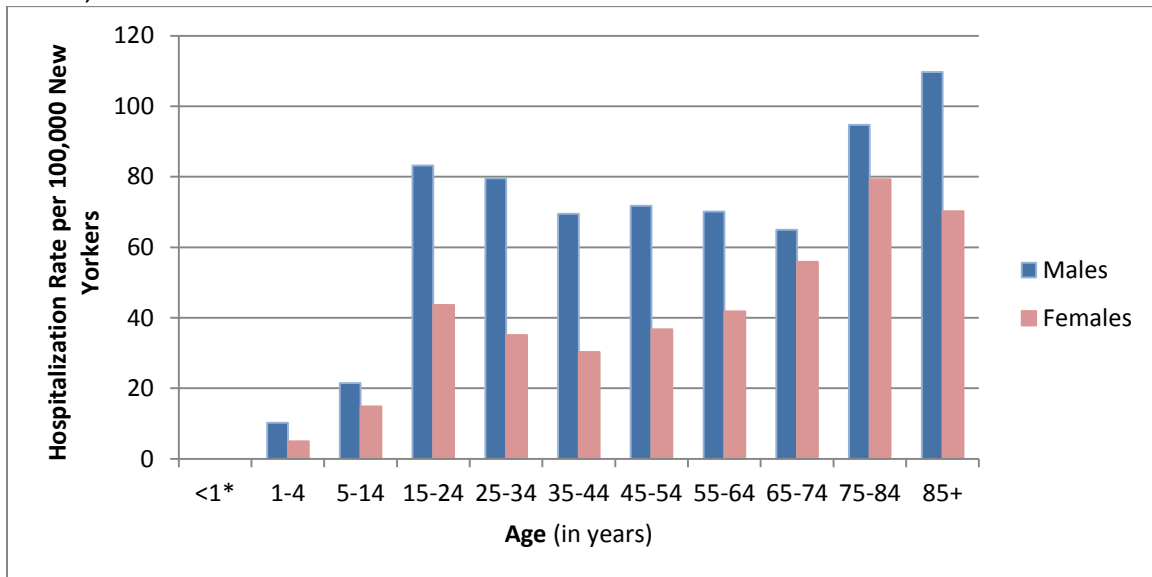
⁸ Motor vehicle traffic injury deaths can include any individual involved in a crash including: motorcyclists, bicyclists, occupants and pedestrians. Motor vehicle traffic related deaths are identified as individuals having an ICD-10 code listed as an underlying cause of death which indicates a transportation accident related injury. ICD-10 Codes: V02-V04 (.1, .9), V09.2, V12-V14 (.3-.9), V19 (.4-.6), V20-V28 (.3-.9), V29 (.4-.9), V30-V39 (.4-.9), V30-V39 (.4-.9), V40-V49 (.4-.9), V50-V59 (.4-.9), V60-V69 (.4-.9), V70-V79 (.4-.9), V80 (.3-.5), V81.1, V82.1, V83-V86 (.0-.3), V87 (.0-.8), V89.2.

Hospitalizations

Hospitalizations due to Motor Vehicle Traffic-Related Injuries⁹, New York State Residents, 2014

Age	All New Yorkers		Males		Females	
	Number of Hospitalizations	Rate per 100,000	Number of Hospitalizations	Rate per 100,000	Number of Hospitalizations	Rate per 100,000
<1	7	2.9	*	*	*	*
1-4	72	7.6	49	10.2	23	5.0
5-14	422	18.2	254	21.5	168	14.9
15-24	1,721	63.6	1,138	83.2	583	43.6
25-34	1,629	57.2	1,127	79.6	502	35.1
35-44	1,243	49.6	856	69.5	387	30.3
45-54	1,500	53.8	974	71.8	526	36.7
55-64	1,383	55.3	837	70.1	546	41.8
65-74	962	60.1	473	65.0	489	55.9
75-84	743	85.7	340	94.7	403	79.3
85+	357	83.2	155	109.7	202	70.2
Total	10,039	50.8	6,208	64.8	3,831	37.7

Rate of Hospitalizations due to Motor Vehicle Traffic -Related Injuries, New York State Residents, 2014



- In 2014, 10,039 New Yorkers were hospitalized following a motor vehicle traffic crash.
- The rate of crash-related hospitalizations was 53% higher for males than for females.
- The highest hospitalization rates were among males 85 years and older.

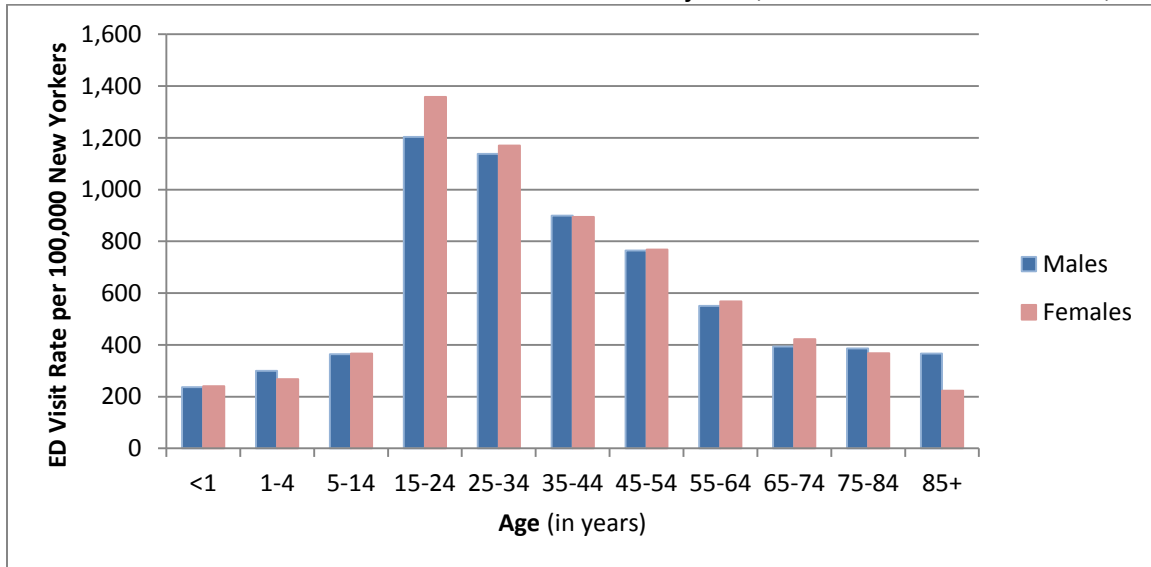
⁹ Motor vehicle traffic injuries can include all people involved in the crash including motorcyclists, bicyclists, occupants and Pedestrians. Motor vehicle traffic related injuries are identified as having an external cause of injury billing code identifying a patient as having been involved with a transportation accident. ICD-9-CM Codes: (E810-E819).

Emergency Department Visits

ED Visits due to Motor Vehicle Traffic-Related Injuries¹⁰, New York State Residents, 2014

Age	All New Yorkers		Males		Females	
	Number of ED Visits	Rate per 100,000	Number of ED Visits	Rate per 100,000	Number of ED Visits	Rate per 100,000
<1	565	235.6	270	220.5	295	251.3
1-4	2,388	252.8	1,250	259.0	1,138	246.3
5-14	7,815	337.8	3,981	336.4	3,834	339.1
15-24	31,202	1153.1	14,828	1083.5	16,374	1224.3
25-34	30,727	1079.1	14,875	1050.5	15,851	1107.4
35-44	21,163	843.8	10,321	838.4	10,841	849.0
45-54	20,445	733.1	9,761	719.8	10,684	745.7
55-64	13,426	537.1	6,314	529.1	7,111	544.4
65-74	6,406	399.9	2,843	390.7	3,563	407.5
75-84	3,049	351.7	1,256	349.8	1,793	353.0
85+	1,139	265.4	474	335.6	665	231.0
Total¹¹	138,325	700.5	66,173	690.7	72,149	709.8

Rate of ED Visits due to Motor Vehicle Traffic-Related Injuries, New York State Residents, 2014



- In 2014, 138,325 New Yorkers are treated in an ED due to motor vehicle traffic-related injuries.
- The rate of ED visits due to crash-related injuries are highest among New Yorkers 15-34 years old.
- Males and Females across most age groups had similar rates of crash-related ED visits.

¹⁰ Motor vehicle traffic injuries can include all people involved in the crash including motorcyclists, bicyclists, occupants and pedestrians. Motor vehicle traffic related injuries are identified as having an external cause of injury billing code identifying a patient as having been involved with a transportation accident. ICD-9-CM Codes: (E810-E819).

¹¹ There are 3 people for which gender is unknown.

Poisoning-Related Injuries – 2014

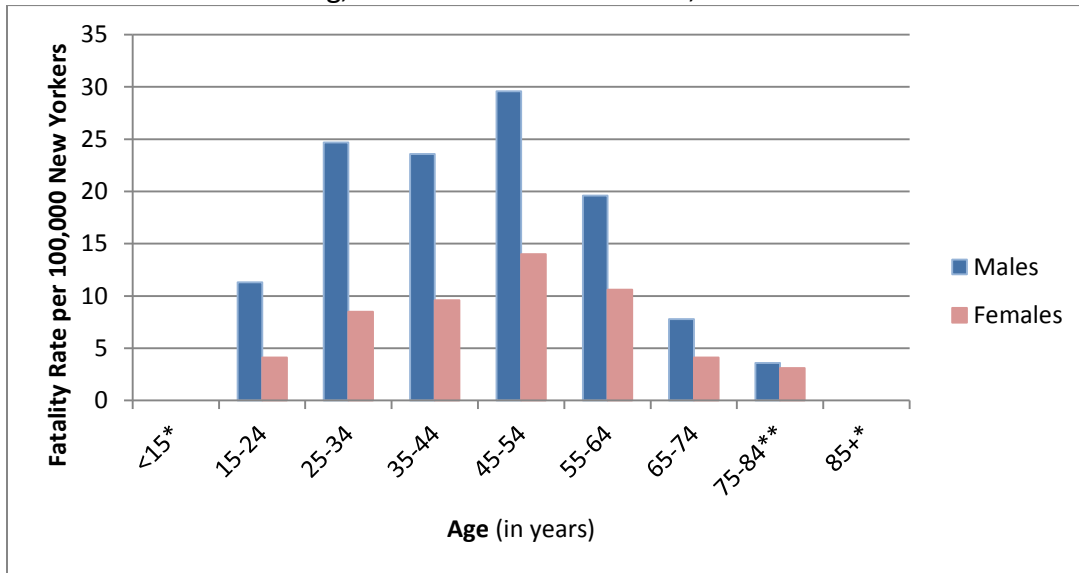
(includes intentional, unintentional, and undetermined intent)

Fatalities

Deaths due to Poisoning¹², New York State Residents, 2014

Age	All New Yorkers		Males		Females	
	Number of Deaths	Rate per 100,000	Number of Deaths	Rate per 100,000	Number of Deaths	Rate per 100,000
<15	8	0.2**	*	*	*	*
15-24	209	7.7	154	11.3	55	4.1
25-34	472	16.6	350	24.7	122	8.5
35-44	413	16.5	290	23.6	123	9.6
45-54	602	21.6	402	29.6	200	14.0
55-64	373	14.9	234	19.6	139	10.6
65-74	93	5.8	57	7.8	36	4.1
75-84	29	3.3	13	3.6**	16	3.1**
85+	20	4.7	*	*	*	*
Total	2,219	11.2	1,508	15.7	711	7.0

Rate of Deaths due to Poisoning, New York State Residents, 2014



- In 2014, 2,219 New Yorkers died from poisoning.
- The poison fatality rate for males was more than twice that for females.
- The highest poisoning fatality rates were among 45-54 year old New York residents.

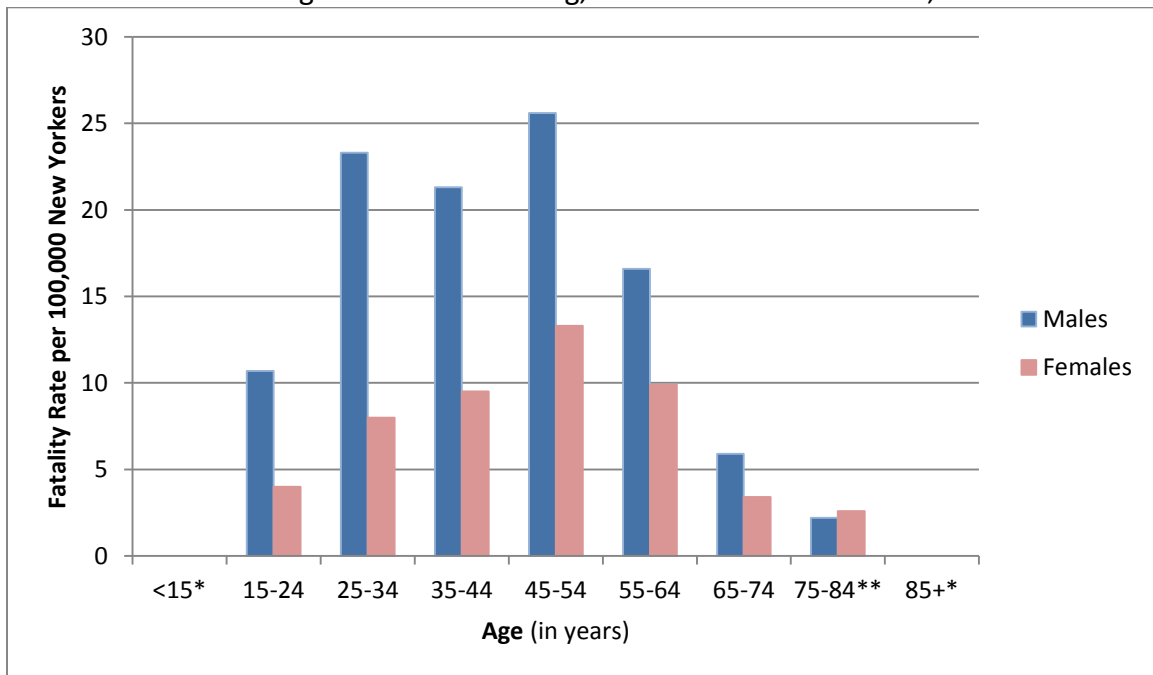
¹² Poisoning deaths include all individuals with an underlying cause of death listed with an ICD-10 code indicating accidental, intentional, self-inflicted or externally caused death as a result of swallowing, inhaling, or otherwise coming into contact with a toxic substance including drug overdoses. ICD-10 Codes: X40-X49, X60-X69, X85-X90, Y10-Y19, Y35.2, U01.6, U01.7.

Fatalities Due to Drug Overdoses

Deaths due to Drug Overdose Poisoning¹³, New York State Residents, 2014

Age	All New Yorkers		Males		Females	
	Number of Deaths	Rate per 100,000	Number of Deaths	Rate per 100,000	Number of Deaths	Rate per 100,000
<15	*	*	*	*	*	*
15-24	200	7.4	146	10.7	54	4.0
25-34	444	15.6	330	23.3	114	8.0
35-44	383	15.3	262	21.3	121	9.5
45-54	537	19.3	347	25.6	190	13.3
55-64	327	13.1	198	16.6	129	9.9
65-74	73	4.6	43	5.9	30	3.4
75-84	21	2.4	8	2.2**	13	2.6**
85+	17	4.0**	*	*	*	*
Total	2,007	10.2	1,340	14.0	667	6.6

Rate of Deaths due to Drug Overdose Poisoning, New York State Residents, 2014



- In 2014, 2,007 New Yorkers died from drug overdose poisoning.
- The drug overdose poison fatality rate for males was more than twice that for females.
- The highest drug overdose poisoning fatality rates were among 45-54 year old New York residents.

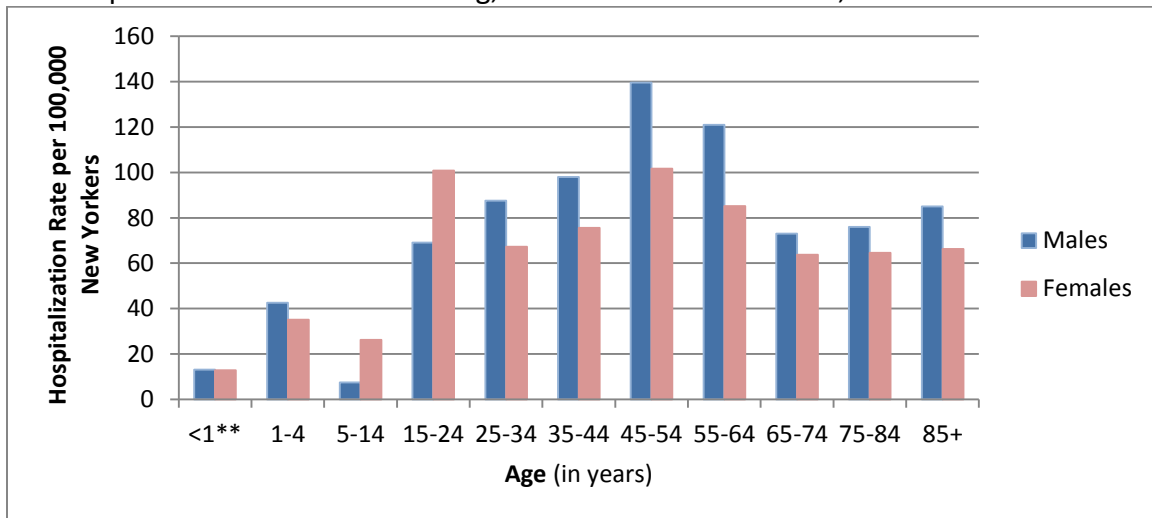
¹³ Drug overdose deaths include all deaths listed with an underlying cause of death ICD-10 code indicating accidental poisoning by drugs, intentional self-poisoning by drugs, assault by drug poisoning, and other undetermined drug poisonings. ICD-10 Codes: X40-X44, X60-X64, X85, Y10-Y14.

Hospitalizations

Hospitalizations due to Poisoning¹⁴, New York State Residents, 2014

Age	All New Yorkers		Males		Females	
	Number of Hospitalizations	Rate per 100,000	Number of Hospitalizations	Rate per 100,000	Number of Hospitalizations	Rate per 100,000
<1	31	12.9	16	13.1**	15	12.8**
1-4	367	38.8	205	42.5	162	35.1
5-14	385	16.6	89	7.5	296	26.2
15-24	2,294	84.8	946	69.1	1,348	100.8
25-34	2,201	77.3	1,239	87.5	962	67.2
35-44	2,173	86.6	1,207	98.0	965	75.6
45-54	3,349	120.1	1,893	139.6	1,456	101.6
55-64	2,556	102.3	1,444	121.0	1,112	85.1
65-74	1,089	68.0	532	73.1	557	63.7
75-84	601	69.3	273	76.0	328	64.6
85+	311	72.5	120	85.0	191	66.3
Total¹⁵	15,357	77.8	7,964	83.1	7,392	72.7

Rate of Hospitalizations due to Poisoning, New York State Residents, 2014



- In 2014, 15,357 New Yorkers were hospitalized due to poisoning.
- New Yorkers ages 45 to 54 and 35 to 44 had the highest hospitalization rates for poisoning.
- Females ages 5 to 24 had higher hospitalization rates for poisoning than males, while males had higher rates for all other age groups.

¹⁴ Poisoning Hospitalizations include all individuals with an ICD-9 external cause of injury code indicating accidental, intentional, self-inflicted or externally caused, as a result of swallowing, inhaling, or otherwise coming into contact with a toxic substance including drug overdoses. ICD-9-CM Codes: E850-E858, E860-E869, E950-E952, E962, E972, E980-E982, E979.6, E979.7.

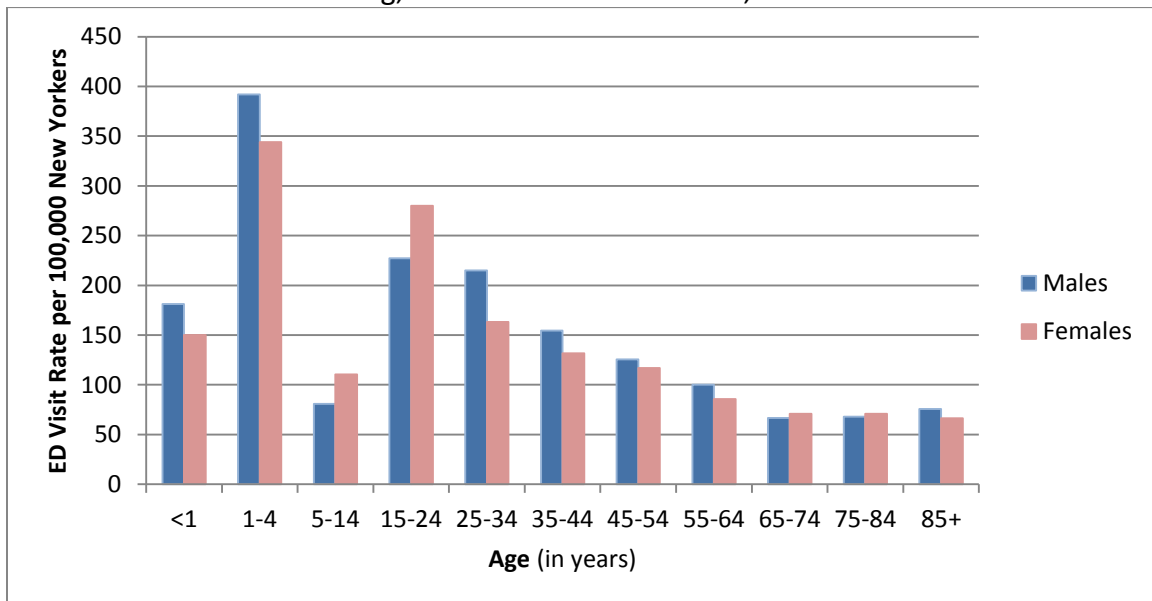
¹⁵ There is 1 person for which gender is unknown.

Emergency Department Visits

ED Visits due to Poisoning¹⁶, New York State Residents, 2014

Age	All New Yorkers		Males		Females	
	Number of ED Visits	Rate per 100,000	Number of ED Visits	Rate per 100,000	Number of ED Visits	Rate per 100,000
<1	398	166.0	222	181.3	176	149.9
1-4	3,480	368.3	1,891	391.8	1,589	343.9
5-14	2,204	95.3	957	80.9	1,247	110.3
15-24	6,852	253.2	3,109	227.2	3,743	279.9
25-34	5,378	188.9	3,043	214.9	2,335	163.1
35-44	3,585	142.9	1,903	154.6	1,681	131.6
45-54	3,378	121.1	1,701	125.4	1,677	117.0
55-64	2,311	92.5	1,194	100.0	1,117	85.5
65-74	1,107	69.1	486	66.8	621	71.0
75-84	604	69.7	244	68.0	360	70.9
85+	298	69.4	107	75.7	191	66.3
Total¹⁷	29,595	149.9	14,857	155.1	14,737	145.0

Rate of ED Visits due to Poisoning, New York State Residents, 2014



- In 2014, 29,595 New Yorkers were treated in an ED due to poisoning.
- The rates of ED visits due to poisoning were highest among children 1-4 years old.

¹⁶ Poisoning ED visits include all individuals with an ICD-9 external cause of injury code indicating accidental, intentional, self-inflicted or externally caused, as a result of swallowing, inhaling, or otherwise coming into contact with a toxic substance including drug overdoses. ICD-9-CM Codes: E850-E858, E860-E869, E950-E952, E962, E972, E980-E982, E979.6, E979.7.

¹⁷ There is 1 person for which gender is unknown

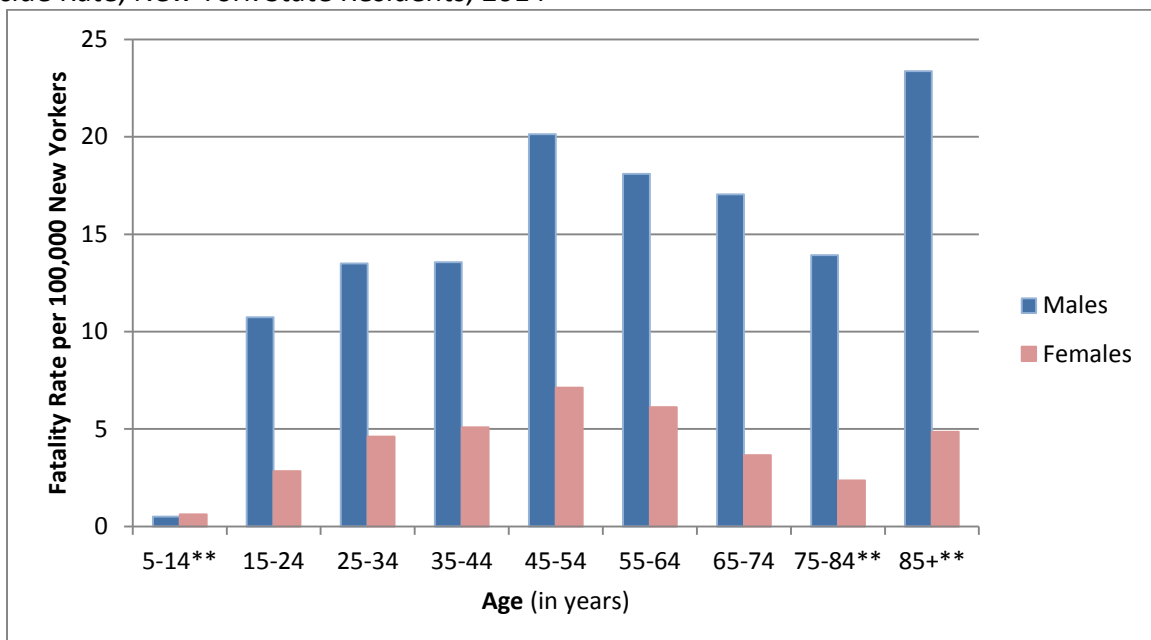
Suicide and Self-Inflicted Injuries -- 2014

Fatalities

Suicide, New York State Residents, 2014

Age	All New Yorkers		Males		Females	
	Number of Deaths	Rate per 100,000	Number of Deaths	Rate per 100,000	Number of Deaths	Rate per 100,000
<1	0	0.0	0	0.0	0	0.0
1-4	0	0.0	0	0.0	0	0.0
5-14	13	0.6**	6	0.5**	7	0.6**
15-24	185	6.8	147	10.7	38	2.8
25-34	257	9.0	191	13.5	66	4.6
35-44	232	9.3	167	13.6	65	5.1
45-54	375	13.4	273	20.1	102	7.1
55-64	296	11.8	216	18.1	80	6.1
65-74	156	9.7	124	17.0	32	3.7
75-84	62	7.2	50	13.9	12	2.4**
85+	47	11.0	33	23.4	14	4.9**
Total	1,623	8.2	1,207	12.6	416	4.1

Suicide Rate, New York State Residents, 2014



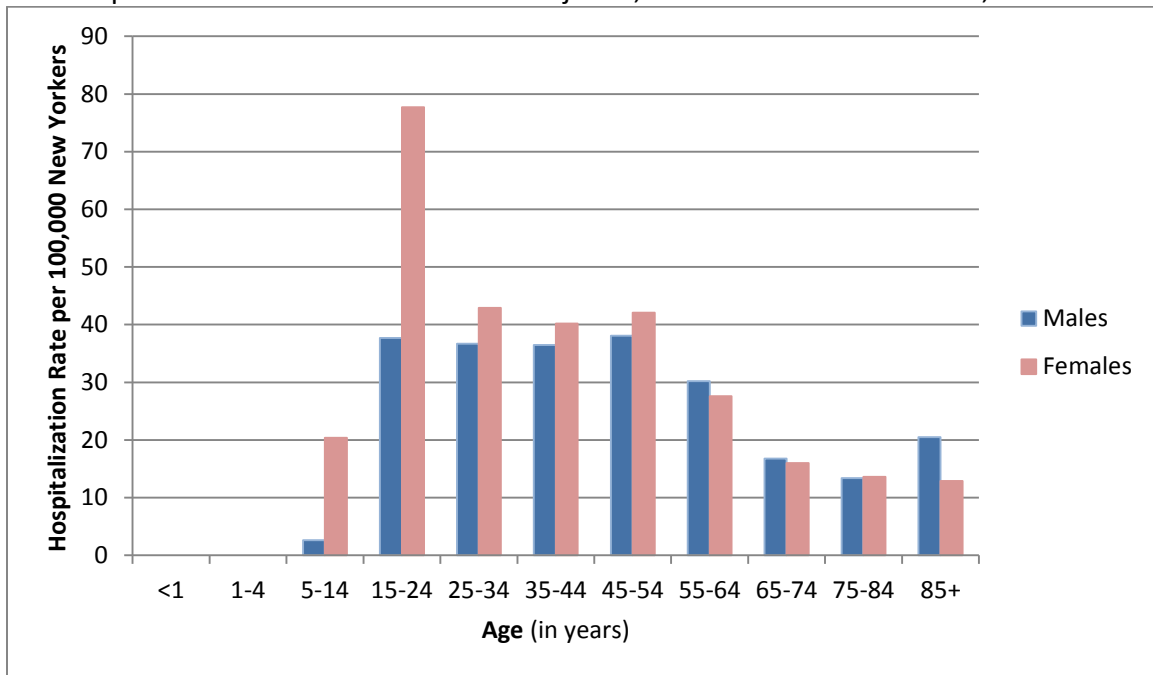
- In 2014, 1,623 New Yorkers died from suicide.
- The suicide rate for males was more than three times that of females.
- The highest rates were among males 45-54 years old and 75 and older.

Hospitalizations

Hospitalizations due to Self-Inflicted Injuries, New York State Residents, 2014

Age	All New Yorkers		Males		Females	
	Number of Hospitalizations	Rate per 100,000	Number of Hospitalizations	Rate per 100,000	Number of Hospitalizations	Rate per 100,000
<1	0	0.0	0	0.0	0	0.0
1-4	0	0.0	0	0.0	0	0.0
5-14	262	11.3	31	2.6	231	20.4
15-24	1,555	57.5	516	37.7	1,039	77.7
25-34	1,133	39.8	519	36.7	614	42.9
35-44	962	38.4	449	36.5	513	40.2
45-54	1,120	40.2	517	38.1	603	42.1
55-64	722	28.9	361	30.2	361	27.6
65-74	262	16.4	122	16.8	140	16.0
75-84	117	13.5	48	13.4	69	13.6
85+	66	15.4	29	20.5	37	12.9
Total	6,199	31.4	2,592	27.1	3,607	35.4

Rate of Hospitalizations due to Self-Inflicted Injuries, New York State Residents, 2014



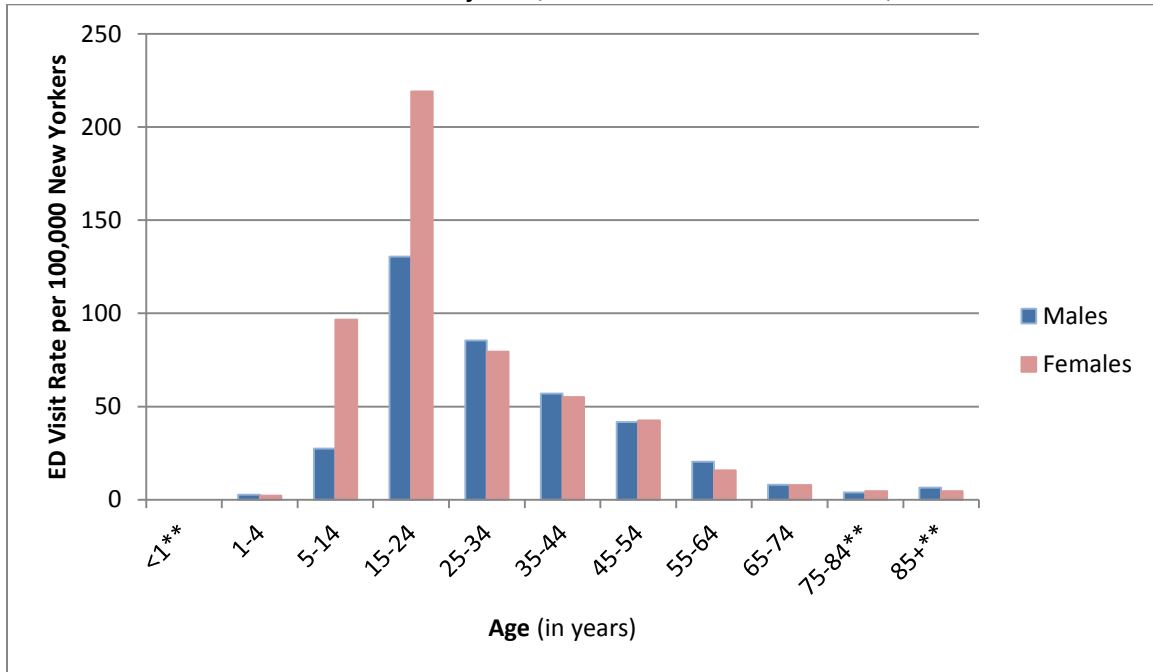
- In 2014, 6,199 New Yorkers were hospitalized due to self-inflicted injuries.
- The highest rates of hospitalization due to self-inflicted injury were among female New Yorkers ages 15 to 24.

Emergency Department Visits

ED Visits due to Self-Inflicted Injuries, New York State Residents, 2014

Age	All New Yorkers		Males		Females	
	Number of ED Visits	Rate per 100,000	Number of ED Visits	Rate per 100,000	Number of ED Visits	Rate per 100,000
<5	24	2.0	14	2.3**	10	1.7**
5-14	1,417	61.2	325	27.5	1,092	96.6
15-24	4,716	174.3	1,785	130.4	2,931	219.1
25-34	2,347	82.4	1,211	85.5	1,136	79.4
35-44	1,406	56.1	702	57.0	704	55.1
45-54	1,174	42.1	565	41.7	609	42.5
55-64	450	18.0	244	20.4	206	15.8
65-74	127	7.9	59	8.1	68	7.8
75-84	37	4.3	14	3.9**	23	4.5
85+	22	5.1	9	6.4**	13	4.5**
Total	11,720	59.4	4,928	51.4	6,792	66.8

Rate of ED Visits due to Self-Inflicted Injuries, New York State Residents, 2014



- In 2014, 11,720 New Yorkers were treated in an ED due to self-inflicted injuries.
- The rates of ED visits due to self-inflicted injuries are highest among New Yorkers 15-24 years old.

Traumatic Brain Injuries – 2014

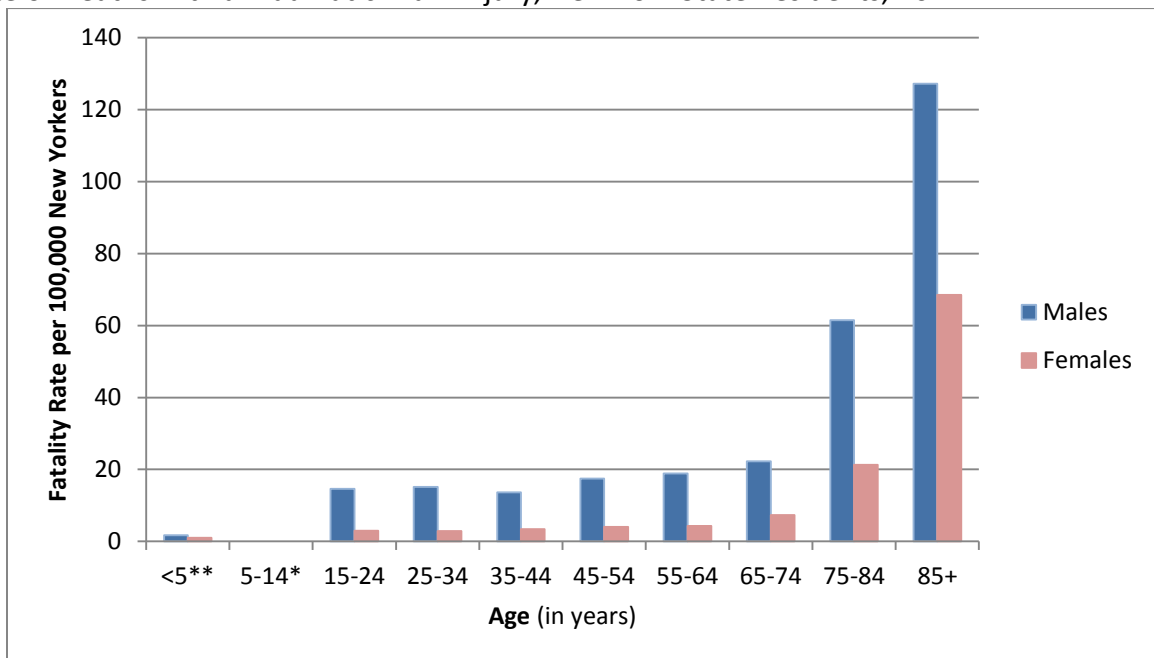
(includes intentional, unintentional, and undetermined intent)

Fatalities

Deaths with a Traumatic Brain Injury, New York State Residents, 2014

Age	All New Yorkers		Males		Females	
	Number of Deaths	Rate per 100,000	Number of Deaths	Rate per 100,000	Number of Deaths	Rate per 100,000
<5	16	1.4**	10	1.7**	6	1.0**
5-14	21	0.9	*	*	*	*
15-24	190	7.0	163	11.9	27	2.0
25-34	229	8.0	189	13.3	40	2.8
35-44	192	7.7	153	12.4	39	3.1
45-54	272	9.8	227	16.7	45	3.1
55-64	300	12.0	239	20.0	61	4.7
65-74	262	16.4	195	26.8	67	7.7
75-84	338	39.0	202	56.3	136	26.8
85+	350	81.6	164	116.1	186	64.6
Total	2,170	11.0	1,558	16.2	612	6.0

Rate of Deaths with a Traumatic Brain Injury, New York State Residents, 2014



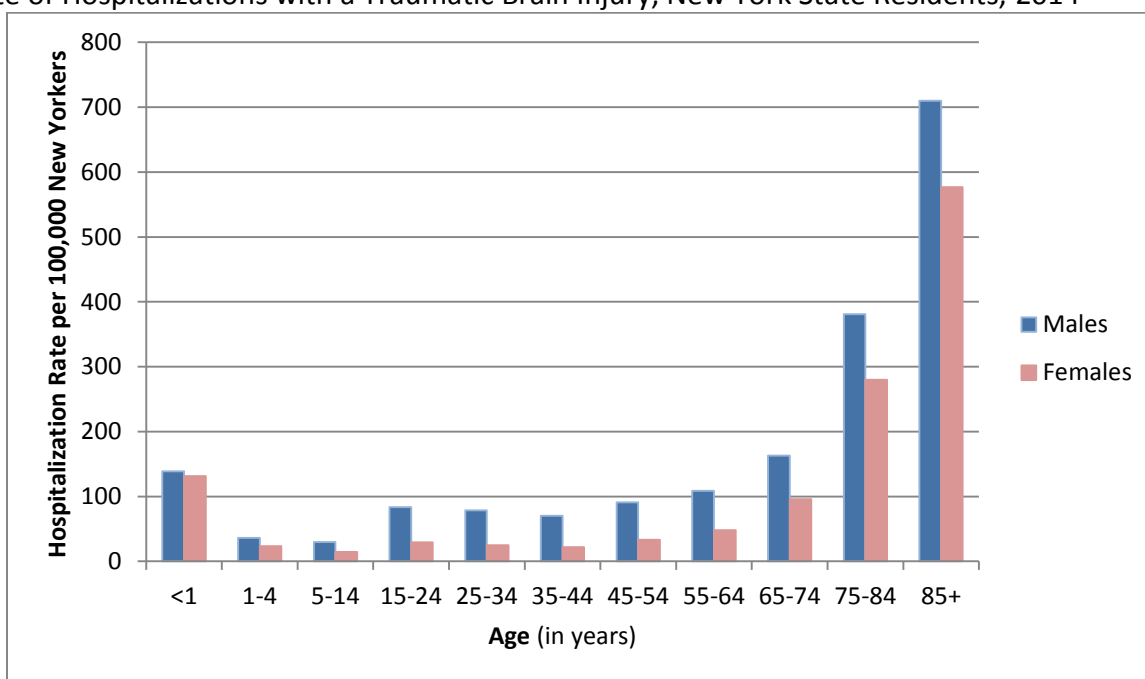
- In 2014, 2,170 New Yorkers died from an injury that resulted in a traumatic brain injury.
- The fatal a traumatic brain injury rate for males was 2.6 times that of females.
- The highest fatal traumatic brain injury rates were among those 85 and older.

Hospitalizations

Hospitalizations with a Traumatic Brain Injury, New York State Residents, 2014

Age	All New Yorkers		Males		Females	
	Number of Hospitalizations	Rate per 100,000	Number of Hospitalizations	Rate per 100,000	Number of Hospitalizations	Rate per 100,000
<1	324	135.1	170	138.9	154	131.2
1-4	283	30.0	175	36.3	108	23.4
5-14	517	22.3	354	29.9	163	14.4
15-24	1,537	56.8	1,145	83.7	392	29.3
25-34	1,466	51.5	1,110	78.4	356	24.9
35-44	1,144	45.6	866	70.3	278	21.8
45-54	1,711	61.4	1,232	90.9	479	33.4
55-64	1,926	77.1	1,299	108.8	627	48.0
65-74	2,023	126.3	1,184	162.7	839	96.0
75-84	2,790	321.8	1,368	381.0	1,422	279.9
85+	2,664	620.7	1,003	710.0	1,661	576.9
Total	16,385	83.0	9,906	103.4	6,479	63.7

Rate of Hospitalizations with a Traumatic Brain Injury, New York State Residents, 2014



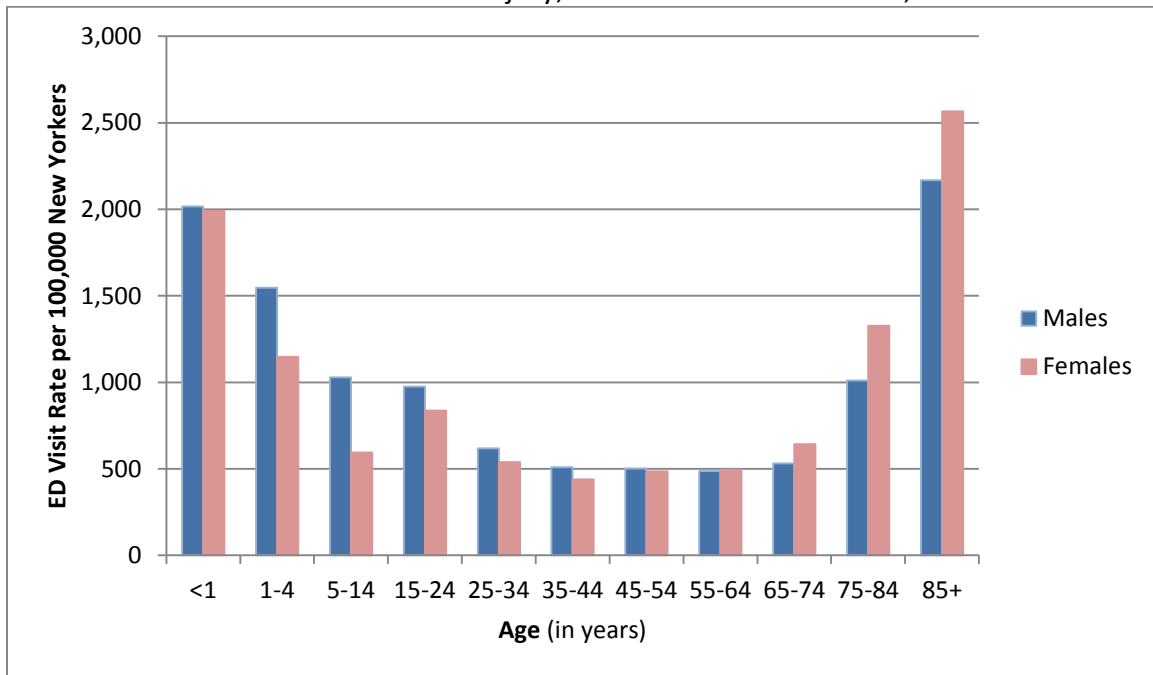
- In 2014, 16,385 New Yorkers were hospitalized with a TBI.
- Males in all age groups had higher rates than females for TBI hospitalizations.
- The highest TBI hospitalization rates were among New Yorkers 75 and older.

Emergency Department Visits

ED Visits with a Traumatic Brain Injury, New York State Residents, 2014

Age	All New Yorkers		Males		Females	
	Number of ED Visits	Rate per 100,000	Number of ED Visits	Rate per 100,000	Number of ED Visits	Rate per 100,000
<1	4,806	2004.1	2,468	2015.9	2,337	1991.0
1-4	12,768	1351.4	7,469	1547.3	5,299	1146.8
5-14	18,883	816.1	12,169	1028.4	6,714	593.9
15-24	24,530	906.5	13,335	974.4	11,195	837.0
25-34	16,457	578.0	8,753	618.2	7,704	538.2
35-44	11,878	473.6	6,271	509.4	5,607	439.1
45-54	13,773	493.9	6,813	502.4	6,959	485.7
55-64	12,271	490.9	5,803	486.3	6,468	495.2
65-74	9,477	591.6	3,866	531.3	5,610	641.7
75-84	10,374	1196.5	3,631	1011.3	6,743	1327.4
85+	10,454	2435.8	3,064	2169.1	7,390	2566.6
Total¹⁸	145,671	737.7	73,642	768.6	72,026	708.6

Rate of ED Visits with a Traumatic Brain Injury, New York State Residents, 2014



- In 2014, 145,671 New Yorkers, treated in an ED, were diagnosed with a TBI.
- The rates of TBI diagnosis at an ED are highest among New Yorkers four and younger, and 75 and older.

¹⁸ There are 3 people for which gender is unknown